

November 11, 2013

Meeting second Monday
of each month at
St. Thomas More
Catholic Church
2900 Kimball Ave
Manhattan, Kansas

Social time at 8:30 a.m.;
meeting begins at 9 a.m.

www.kpqq.com

Prairie Pointer

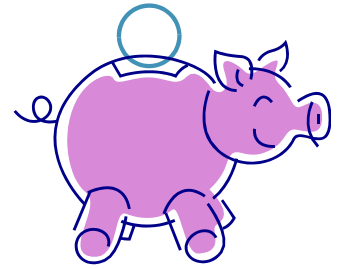
KONZA PRAIRIE QUILTERS' GUILD NEWSLETTER
EDITOR: VIRGINIA BENNETT

Upcoming programs:

November 11: Cathy Cholick and friends present "Spice up your quilts with an interesting border."

Quilts from the Heart will be turned over to the Crisis Center (Safe Shelter.) Come and see them all!

December 9: Karen Malone will show us what's up for next year at the quilt shop. Bring a treat to share if you wish, but there will be no brunch.



It's time to pay dues for 2014. Please write your check for \$35 payable to KPQG and give it to Sharon Pollman. Please also double check that your entry in the directory is currently correct. If it isn't, please give Sharon your changes.

Getting to Know the Website:

Did you know that the guild website has all the show and tell photos from the last several years? Or that the challenge photos are up? Go to

www.kpqq.com

And find old show and tell on the left side, and the challenge quilts under "Bits and Pieces"

November Refreshments

If you are unable to bring refreshments in your assigned month, you must arrange your own substitute.

Carol Sheehe
Evie Shultz
Karen Spaeth
Mary Swisher
Carol Tibbetts
Jane Temps
Kathy Triplett
Nancy Venburg

Prez Sez

Did you see those huge snowflakes? It was like we went from summer to winter, but now we do seem to be enjoying some nice "fall" days. Still have some time to get some of those projects done for the holidays, which are fast approaching.

Our "150 Shades of Purple" challenge quilts & projects were certainly a great program for our October meeting. Everyone seemed to be really enjoying the day!

Thanks to our Nominating Committee of Gerrie Fouts, Jan Klink and Sue Damkroger we have a full slate of officers for next year, and we will be voting at our meeting. There will be a sign-up sheet for the additional committees, and I hope many of you step forward and sign up to help with the guild activities next year.

Ronna

Block of the Month 2013

The 2013 Block of the Month is an Easter wall hanging. The patterns will be available each month at the KPQG meeting.

If you are unable to attend you can send Judi Robb a Stamped addressed envelope and it will be mailed to you.

The blocks are applique and we recommend that you fuse them.

We hope you enjoy the blocks.

Judi Robb and Nancy Graves

Library Corner



Read All About It!

Jelly Roll Quilts: the Perfect Guide to Making the Most of the Latest Strip Rolls by Pam and Nicky Lintott. Blue Ash, OH: David & Charles Ltd., 2008.

The Lintotts have produced a book of patterns that use one Moda jelly roll or the equivalent number of 2 ½ inch strips, sometimes with the addition of background fabric and/or borders. They provide suggestions for enlarging the quilts to bed size but for the most part you will have to figure that out for yourself. Using a jelly roll has several benefits, one being time saved in cutting fabric and another being the well-coordinated but scrappy look of the finished quilt.

Committees and Board Elections:

Please let Gerri Fouts, Sue Damkroger, or Jan Klink know if you are willing to serve on a committee. Sign up sheets will be available at the meeting. Help make your guild a success! Officer candidates for next year are:

President	Jennie Burden
Assistant President	Carol Pacey
Program 2014	Delores and Edgar Chambers
Programs 2015	Eloise Brown and Judy Marshall
Secretary	Kathy Triplett with backup by Ronna Robertson
Treasurer	Sharon Pollman
Members at large	Sue Damkroger, Jan Klink, And Suzie Wong

Thank you all for volunteering!

At right: quilt Carolyn Fellows made for her church in Texas.



November Birthdays

November 11, 2013

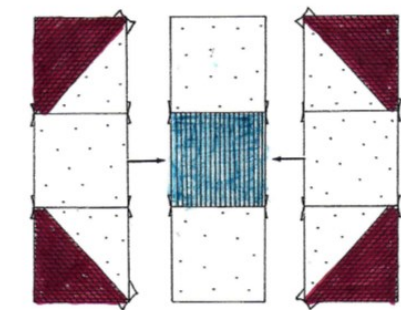
PRAIRIE POINTER

Celebrating in November:

Char Grelk	1
Dorris Beckenhauer	2
Nelda Elder	5
Karen Malone	7
Beverly Holdren	9
Ellie Morton	13
Fay Allison	15
Mary Kay Henry	19
Sydney Carlin	20
Madeline Dunn	21
Melody Day	24
Sharon Pollman	26



Celebrating in November, pictured: MaryKay Henry, Sydney Carlin, Fay Allison, Willie Wildcat, Dorris Beckenhauer, Char Grelk, and Nelda Elder



President's Quilt for Ronna:

President's Quilt Block for Ronna: Known by many names, Ronna found this Kansas Dugout block and would like it done in red and white with a blue center.

Cut one block of blue fabric & four blocks of white fabric, $3\frac{1}{2}$ x $3\frac{1}{2}$ ". Then cut two blocks each of red and white fabric, $4\frac{1}{2}$ x $4\frac{1}{2}$ ". With a red and white placed face to face, stitch $\frac{1}{4}$ " on each side of the diagonal & cut on the diagonal to create 2 corner blocks. Repeat for the other 2 corner blocks. Press to the dark fabric. Trim to $3\frac{1}{2}$ x $3\frac{1}{2}$ ". Join the blocks as shown to be $9\frac{1}{2}$ x $9\frac{1}{2}$ " to finish to 9x9". Please be sure to sign your block.

Patchwork Pieces

Every Thursday from 11 am-3 pm a group meets at the Riley County Senior Center to sew, quilt and visit. Lunch is on your own. Call Susie Wong for more information.
Fourth Tuesday: 9:30-3. Riley Co. Senior Service Center. See Mary Jo Harbour about class schedule.

**Longarm
for Sale
18" Quilting
Machine**

Sue Damkroger

Norma Larson has generously agreed to bring the laundry basket each month for any donations for the Safe Shelter (or Crisis Center) and then take the donations to the shelter's office. Almost anything is welcome--personal items, baby needs, household goods, bedding, etc. Thanks!

KONZA PRAIRIE QUILTERS' GUILD

BOX 271

MANHATTAN KS 66505-0271

www.kpqq.com



Carol H. Elmore
Quilt and Quilted Textile
Appraisals, Lectures, and Workshops

Written and Oral Appraisals of antique quilts,
contemporary quilts, & other quilted textiles for:
Insurance replacement value,
Fair market value, & Donation value

Carol is a certified American Quilter's Society Appraiser.
Appointments available for home, quilting groups, coffee groups,
or others. All appraisals are confidential
Call (785) 537-7221

A reminder:

Personal sales are only allowed the second month of each quarter, February, May, August, and November. We appreciate you saving your sales until these months.



The *Prairie Pointer* is the monthly newsletter of Konza Prairie Quilters' Guild. Membership is open to all those interested in quilts and quilting. Yearly dues are \$35 and include 12 Opportunity Tickets, admission to all meetings, monthly newsletter, access to library materials, block of the month patterns, and opportunity to participate in workshops, field trips and public events. Guests are welcome to attend twice before joining.