

October 14, 2013

Meeting second Monday
of each month at
St. Thomas More
Catholic Church
2900 Kimball Ave
Manhattan, Kansas

Social time at 8:30 a.m.;
meeting begins at 9 a.m.

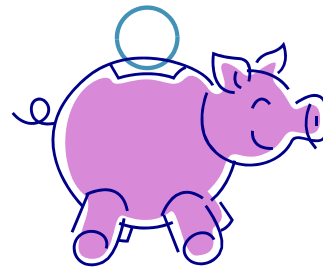
www.kpqq.com

Prairie Pointer

KONZA PRAIRIE QUILTERS' GUILD NEWSLETTER
EDITOR: VIRGINIA BENNETT

Upcoming programs:

October 14: Challenge quilts are due ! Bring your quilt or quilt top and see what everyone else has done. Special guests from KSU will be on hand to view the quilts.



It's time to pay dues for 2014. Please write your check for \$35 payable to KPQG and give it to Sharon Pollman. Please also double check that your entry in the directory is currently correct. If it isn't, please give Sharon your changes.

Please note the following address changes in your directories:

Bonnie Olsen email change to:
bjolsen27@gmail.com

Carol Cowen email change to:
ccowen34@gmail.com

Thank you.

Notice: Dorine & Stan Elsea have extended an invitation to the members of our guild to come shop at their house at 5861 Eureka Drive on Monday, October 14, following the guild meeting.

They still have many books and lots of fabric available at reduced prices left over from when they had the quilt shop here in Manhattan before All About Quilts. They live out toward the airport, and we can caravan or car pool out right after the meeting.

Prez Sez

Our "150 Shades of Purple" challenge quilts & projects are due at this October meeting. I am really looking forward to seeing the creative ideas that you all have come up with to include at least 150 shades of purple!

Gerrie Fouts, Jan Klink and Sue Damkroger are busy recruiting our new officers for next year. I hope many of you step forward and say "Yes" when you are given an opportunity to help with the guild activities next year.

October Refreshments

If you are unable to bring refreshments in your assigned month, you must arrange your own substitute.

Pauline Adolph
Fay Allison
Lana Arpin
Joanna Baker
Nelda Warnica
Susan Weaver
Kathryn Wilson
Margie Young

Block of the Month 2013

The 2013 Block of the Month is an Easter wall hanging. The patterns will be available each month at the KPQG meeting.

If you are unable to attend you can send Judi Robb a Stamped addressed envelope and it will be mailed to you.

The blocks are applique and we recommend that you fuse them.

We hope you enjoy the blocks.

Judi Robb and Nancy Graves

Library Corner



Read All About It!

Fat Quarter Quilts by M'Liss Rae Hawley. Bothell, WA: Martingale & Co., 1999.

M'Liss Hawley presents eight quilt plans that each use six coordinating fat quarters plus a background fabric. The patterns are quick and easy to construct and the end results are small quilts that can be doubled or bordered to enlarge them to bed size. The book includes a gallery of two or three finished quilts in each pattern, illustrating the influence fabric selection has on the final product. As a bonus the author includes a pattern for a fat quarter bag.

One Hundred Fifty Shades of Purple

Just a reminder, the quilts need to be completed for display at our October 14 meeting. Any questions, call Carol Pacey 539-4723, or e-mail cpacey@ksu.edu



Ronna Robertson's Twisted Bargello Quilt



Judy Adams' sampler quilt

October Birthdays

October 14, 2013

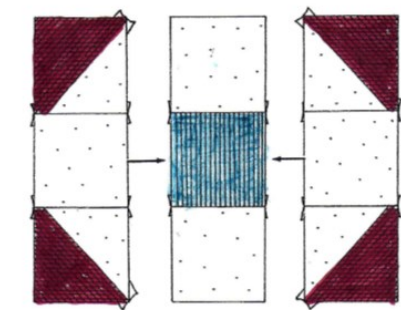
Celebrating in October:

Mary Swisher	6
Judi Robb	10
Nayola Norris	14
Kathy Triplett	14
Arlene Odde	15
Susie Weir	16
Janet Finney	17
Ronna Robertson	17
Sue Damkroger	20
Jan Pope	26
Katherine Hummels	31



Celebrating in October, pictured: Susie Weir, Judi Robb, Ronna Robertson, Mary Swisher, Arlene Odde, Kathy Triplett, Nayola Norris in front

PRAIRIE POINTER



President's Quilt for Ronna:

President's Quilt Block for Ronna: Known by many names, Ronna found this Kansas Dugout block and would like it done in red and white with a blue center.

Cut one block of blue fabric & four blocks of white fabric, $3\frac{1}{2} \times 3\frac{1}{2}$ ". Then cut two blocks each of red and white fabric, $4\frac{1}{2} \times 4\frac{1}{2}$ ". With a red and white placed face to face, stitch $\frac{1}{4}$ " on each side of the diagonal & cut on the diagonal to create 2 corner blocks. Repeat for the other 2 corner blocks. Press to the dark fabric. Trim to $3\frac{1}{2} \times 3\frac{1}{2}$ ". Join the blocks as shown to be $9\frac{1}{2} \times 9\frac{1}{2}$ " to finish to 9×9 ". Please be sure to sign your block.

Patchwork Pieces

Every Thursday from 11 am-3 pm a group meets at the Riley County Senior Center to sew, quilt and visit. Lunch is on your own. Call Susie Wong for more information.
Fourth Tuesday: 9:30-3. Riley Co. Senior Service Center. See Mary Jo Harbour about class schedule.

Norma Larson has generously agreed to bring the laundry basket each month for any donations for the Safe Shelter (or Crisis Center) and then take the donations to the shelter's office. Almost anything is welcome--personal items, baby needs, household goods, bedding, etc. Thanks!

KONZA PRAIRIE QUILTERS' GUILD

BOX 271

MANHATTAN KS 66505-0271

www.kpqq.com



Carol H. Elmore
Quilt and Quilted Textile
Appraisals, Lectures, and Workshops

Written and Oral Appraisals of antique quilts,
contemporary quilts, & other quilted textiles for:
Insurance replacement value,
Fair market value, & Donation value

Carol is a certified American Quilter's Society Appraiser.
Appointments available for home, quilting groups, coffee groups,
or others. All appraisals are confidential
Call (785) 537-7221

A reminder:

Personal sales are only allowed the second month of each quarter, February, May, August, and November. We appreciate you saving your sales until these months.



The *Prairie Pointer* is the monthly newsletter of Konza Prairie Quilters' Guild. Membership is open to all those interested in quilts and quilting. Yearly dues are \$35 and include 12 Opportunity Tickets, admission to all meetings, monthly newsletter, access to library materials, block of the month patterns, and opportunity to participate in workshops, field trips and public events. Guests are welcome to attend twice before joining.