

September 12, 2011

Meeting second Monday
of each month at
St. Thomas More
Catholic Church
2900 Kimball Ave
Manhattan, Kansas

Social time at 8:30 a.m.;
meeting begins at 9 a.m.

www.kpqg.com

Prairie Pointer

KONZA PRAIRIE QUILTERS' GUILD NEWSLETTER
EDITOR: VIRGINIA BENNETT

Upcoming programs.

September 12: "Everything Old is New Again" by DeAnna Hobson. Afternoon workshop Basket of Blooms Applique requires basket sewn in advance. Pattern available at August meeting as basket must be premade, \$10. See Gerri for details and supply list.

October 10: Twisted Bargello by Tony Munoz. Please note that for the workshop Strips must be sewn prior to workshop in order to get most of quilt completed. **Challenge quilts due!**

Prez Sez

The last day of the pool being open came way too early for me this year, the kids are in school, thoughts turn to different activities: football, gardens, getting ready for the 2012 KPQG year. Be sure that you have signed up for a shift at Pumpkin Patch this month.

Another item of importance is going to be filling the slate of officers for next year. While it is true that it is work to be on the Board and hold and office in Guild, it is fun and interesting to get to know other members of the our group that you may not know well. Our group benefits when new people volunteer to hold office and bring differing points of view to the activities in which we participate. Please consider whether or not you have time to give. All of our committees will need to be filled as well as our elected offices. Maybe the most important job that will need to be filled is the chairman job for Quilts from the Heart. Kudos to everyone who plans, cuts, sews, quilts, binds, and labels these quilts that comfort children in distress. Thank you to our members who conducted mini-workshops last month, I think that everyone really enjoyed it. Susie



Pumpkin Patch

Please be thinking about when you might be able to work Pumpkin Patch in September. We still need volunteers. **The new dates are September 23 & 24.** Also we will be selling small items again, both the remainders from past shows, and anything you would care to donate, such as table runners, pot holders, or something else small. These can be dropped off at my home, 827 Kearney, or bring them to guild meetings.

Thanks for your help.

Barb Howe

September Refreshments

If you are unable to bring refreshments in your assigned month, you must arrange your own substitute.

Linda Spielman
Mary Swisher
Kathy Triplett
Nancy Venburg
Nelda Warnica
Kathryn Wilson
Suzie Wong
Margie Young

Block of the Month 2011

Judi Robb and Nancy Graves have designed a set of twelve blocks for this year's Block of the Month. Since the size doesn't work well in the newsletter, and sending it electronically distorts the size, paper patterns will be available at each guild meeting. If you can't pick yours up in person, please give Judi or Nancy a self-addressed, stamped envelope and they will mail the pattern to you.

In addition to the monthly drawing for prizes for completed blocks, there will be an end-of-the-year drawing for all those who complete all 12 blocks.

These blocks will be suited for either hand appliqué or fusible, and will have a monthly theme. They are all flower blocks.

Block of the Month 2012

We will be twiddling, fiddling, stuffing and tucking 12 inch blocks for the 2012 BOM. If you are looking for something different for a wall hanging or small quilt, join us. In order to comply with copyright law everyone will need to purchase a book. All About Quilts has ordered the books Tucked Up in Bed by Jennie Rayment for us. The books have arrived and are ready for quilters to pick up. See Ruth Prescott to see block samples or for more information



Cathy Cholick Nine Patch variation

Library Corner



Read All About It!

Quick and Colorful Appliqué: 14 Lively New Designs, edited by Rosemary Wilkinson, Woodinville, WA, Martindale & Co., 2006.

Piecing diagrams are easy to understand for these delightful quilts. Most of the featured quilts are done on light backgrounds, which are very attractive. Generally, four alternative backgrounds and appliques will give you additional ideas for making the quilt. Many of the patterns are suitable for children's quilts. Appliqué, done on patchwork pieces, may be done by hand and machine. Patterns are included but may have to be resized on the copy machine. Butterflies, flowers, pinwheels, etc. are common themes.

On the Road

Sept 3-4: Little Balkans Quilt Show: Pittsburg Memorial Auditorium, 503 N. Pine, Pittsburg, 66762
Hours: Sat 9 - 5, Sun 12 - 4

Sept. 17-18: Quilting Now and Then: 5221 SW West Dr, Topeka, KS Kansas Capital Quilters Guild. Hours: Sat 10-5, Sun. 12-5

Always remember to call ahead to confirm dates and time before heading out on the

September Birthdays

Celebrating in September

Sharon Johns	1
Theresa Gunther	3
Evelyn Shultz	4
Margie Young	5
Callie Hildebrand	8
Ora Mae Kirkendall	10
Gerrie Fouts	13
Lois Morrison	14
Barbara Naughton	16
Norma Butler	19
Rebecca Meyerkorth	20
Pauline Adolph	23
Whitney Short	24
Delores Chambers	26
Mary Corah	29
Ann Lee	30



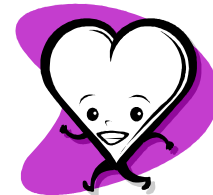
Celebrating in September: back row, Margie Young, Whitney Short, Lois Morrison, Rebecca Meyerkorth, and Ora Mae Kirkendall. Front, Pauline Adolph and Gerrie Fouts

Happy Birthday Kansas is the theme for the 2011 Challenge Quilt. Since this is the 150th birthday for our Wonderful State of Kansas it seems only appropriate to honor our state with a challenge quilt. There is no size limitation and no fabric that has to be incorporated into your quilt. The Deadline is the October meeting.

GOOD LUCK to everyone.

Sue Jones

Quilts from the



Come join us at All About Quilts to sew labels on the Quilts from the Heart on October 11th starting at 9am. Please bring your own white thread, needles, thimble and scissors. We usually have a fun time visiting and getting to see all the beautiful quilts that people have made this past year.

If you are in the mood to bring cookies, you will earn yourself many friends. We are usually done by lunch, but it all depends on how many people join us that day. Please mark the day on your calendar. Thanks, Cathy Cholick

Patchwork Pieces

President's Quilt for Susie: Buckeye Beauty again

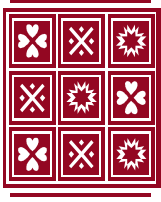
It is a simple 12 inch block. Each block needs six different fall colored calicoes and two different cream/tans. It is made up of 4 smaller blocks. 2 of the blocks are half-square triangle blocks and two are 4 patch blocks. If you are unfamiliar with the block, you can see an example at:

<http://www.quilterscache.com/B/BuckeyeBeautyBlock.html>

Be sure to sign your block.

Every Thursday from 11 am-3 pm a group meets at the Riley County Senior Center to sew, quilt and visit. Lunch is on your own. Call Mary Jo Harbour or Susie Wong for more information.

Fourth Tuesday: 9:30-3. Riley Co. Senior Service Center. Free classes by Mary Jo Harbour.



Carol H. Elmore
Quilt and Quilted Textile
Appraisals, Lectures, and Workshops

Written and Oral Appraisals of antique quilts,
contemporary quilts, & other quilted textiles for:

Insurance replacement value,

Fair market value, & Donation value

Carol is a certified American Quilter's Society Appraiser.
Appointments available for home, quilting groups, coffee
groups, or others. All appraisals are confidential
Call (785) 537-7221

**OODLES OF
DOODLES
QUILT SHOP**

With Longarm Service

107 S. Broadway Riley

Tues, Wed, Fri, Sat 10am-4pm

Mon, Thurs 12-5pm

785-293-2580 bs hrs

785-293-5546 after hrs

Reminder: to sell items at the guild meeting, call
Margie Young 539-2063, to arrange for the table. .



The *Prairie Pointer* is the monthly newsletter of Konza Prairie Quilters' Guild. Membership is open to all those interested in quilts and quilting. Yearly dues are \$35 and include 12 Opportunity Tickets, admission to all meetings, monthly newsletter, access to library materials, block of the month patterns, and opportunity to participate in workshops, field trips and public events. Guests are welcome to attend twice before joining.

~~~~~  
**KONZA PRAIRIE QUILTERS' GUILD**  
**BOX 271**  
**MANHATTAN KS 66505-0271**  
~~~~~

www.kpqg.com

