

August 11, 2008

Final Month at 1st Presbyterian, 8th & Leavenworth

Meeting second Monday of each month at St. Thomas More Catholic Church 2900 Kimball Ave Manhattan, Kansas

Social time at 8:30 a.m.; meeting begins at 9 a.m.

www.kpqg.com

Prairie Pointer

KONZA PRAIRIE QUILTERS' GUILD NEWSLETTER
EDITOR: JENNIE BURDEN

August 11: Lerlene Nevaril will share creative ideas on enhancing the back of your quilt in her morning lecture entitled "Make Your Quilt Back Special." Afternoon workshop is also entitled Make Your Quilt Back Special. Due to the higher cost of bringing these famous quilters to KPQG, the general public will be charged \$5 more than members for these workshops. The workshops will be open to our guild members first, the evening guild and then the general public.

September 15: We will be back at St. Thomas More, in the new section, for our September meeting. Speaker: Karen Kay Buckley. The morning lecture is "From the Beginning Album as a Quilter." An afternoon workshop will enlighten quilters on drafting appliqué patterns. "Magical Medallions" is the title of the Tuesday workshop.

www.karenkaybuckley.com
Oct 13: Elaine Boese will speak on "The Friendship of Quilting." Miniature quilt techniques will be explored in the workshop entitled "Delectable Mountains."



Sue Jones' batik quilt



Stars and Hearts by Ora Mae Kirkendahl

August Refreshments

If you are unable to bring refreshments in your assigned month, you must arrange your own substitute.

Paula Woodward
Kathryn Wilson
Susan Weaver
Nelda Warnica
Fran Walter
Nancy Venburg
Kathy Triplett



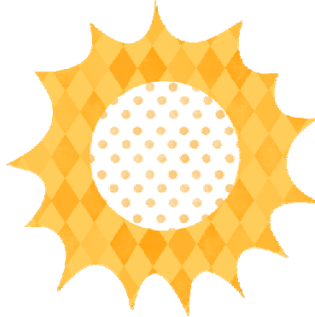
August speaker Kathy Delaney

August Birthdays

Alison Boyd	1
Carol Hoogheem	2
Susie Sapp	08
Priscilla Wattenford	12
Jessi Wylie	14
Marilyn Frank	22
Elaine Baxter	24
Frances Walter	24
Sue Moore-Snider	25
Dottie Heinz	26
Joan Page	31



Elaine Baxter



Harriette Janke's cow quilt.

Member Profile

Mary Jo Harbour has been writing the member profiles for several years now and has found herself running out of fresh material. So she is taking a brief respite to re-organize.

Member profile is a much-read feature of the KPQG newsletter. Through it we get to know our fellow quilters better. Everyone is encouraged to fill out (or update) their member profile form so we can keep this feature fresh and current.

Michaeline Chance Reay still needs help coring out some tree stumps; the trees were damaged in the tornado and have been removed. If someone knows of anyone who has the equipment and would volunteer to do this for her, please call her at 776-6254.



Eloise Brown: machine embroider and reproduction fabrics.

Patchwork Pieces

President's Quilt for Eloise: Indian Hatchet

Materials: one 8½" light square, muslin or light tone-on-tone two 4½" dark or medium squares

Block assembly:

1. Using diagonal seams methods, place 1 dark square on corner of light square, right sides facing and aligning corners. Stitch along diagonal of dark square. Trim 1/4" away from stitching. Repeat on opposite corner of light square.
2. Block should measure 8½". Be sure to sign block.

Every Thursday from 11 am-3 pm a group meets at the Riley County Senior Center to sew, quilt and visit. Lunch is on your own.
Fourth Monday: 9:30-3. Riley Co. Senior Service Center. Free classes by Mary Jo Harbour.

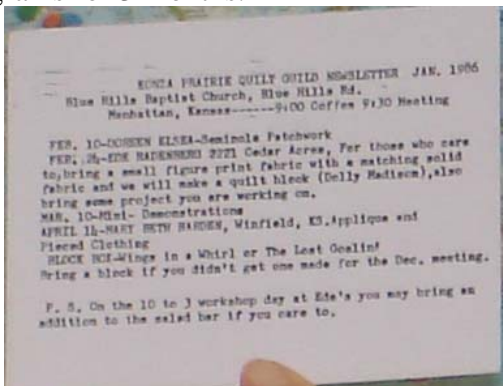
Additions to directory:

Michaeline Chance Reay, 776-6254, 3026 Cherry Hill, Manhattan 66503, birthday Sept 4, e-mail mreay@ksu.edu

Charlotte Major, 317-2315, 3000 Tuttle Creek Blvd, #503, Manhattan 66502, birthday Nov 23, e-mail sewladycu2@aol

Robbie Courts, 2801 Rigney Road Apt L-22, Steilacoom, WA 98388, email: mrcourts@gmail.com, Home 253-503-7225, Cell (Robbie) 253-495-5263. It will change again 1 October, as we are building a house: 1004 Bell Hill Place, DuPont, WA 98327.

Norma Butler shared this 1986 “newsletter” from KPQG’s early days; the postcard covered programs for 3 months.



Seeing Stars—Kathy Delaney’s first and most popular commercial pattern.

Sunshine and Shadows

Please send notices for Sunshine and Shadows to jennieb53@cox.net, call 539-1204, or submit in writing at guild meetings.

On the Road

Quilt Shows & Events of Interest

- July 19-Aug 30 Everything Old is New Again, KPQG quilt exhibit, Manhattan Arts Center, 1520 Poyntz, Manhattan. Hours 10-5 M-F, 1-4 Sat.
- Aug 16 Costume and Textiles Collectibles Evaluation Day, Manhattan Arts Center, 1520 Poyntz, Manhattan. 10 am—4 pm; \$10 donation suggested. (see pg 5 for details).
- Aug 30-31 Little Bankans Days 21st Annual Quilt Show. Pittsburg Mem. Aud., 503 N. Pine, Pittsburg KS. Admission \$3. Sat 9-5, Sun 1-4. 620-231-0050, ehurt@pixius.net.
- Aug 31-Oct 5 Elements from the Front Range Contemporary Quilters, Stauth Memorial Museum, 111 N. Aztec, Montezuma KS. 620-846-2527.
- Sept 27-28 Drag & Brag Quilt Show, Paola Middle School, 405 N. Hospital Dr. 10-5 Sat, 12-4 Sun., Paola KS
- Oct 8-11 Heart of Kansas Quilt Guild show, Domestic Arts Bldg, Kansas State Fairgrounds, Hutchinson, KS.
- Oct 13-14 Starlight Quilter Guild Quilt Show, Shawnee Indian Mission Fall Festival, Fairway KS 816-361-5584 or terriodc@yahoo.com.

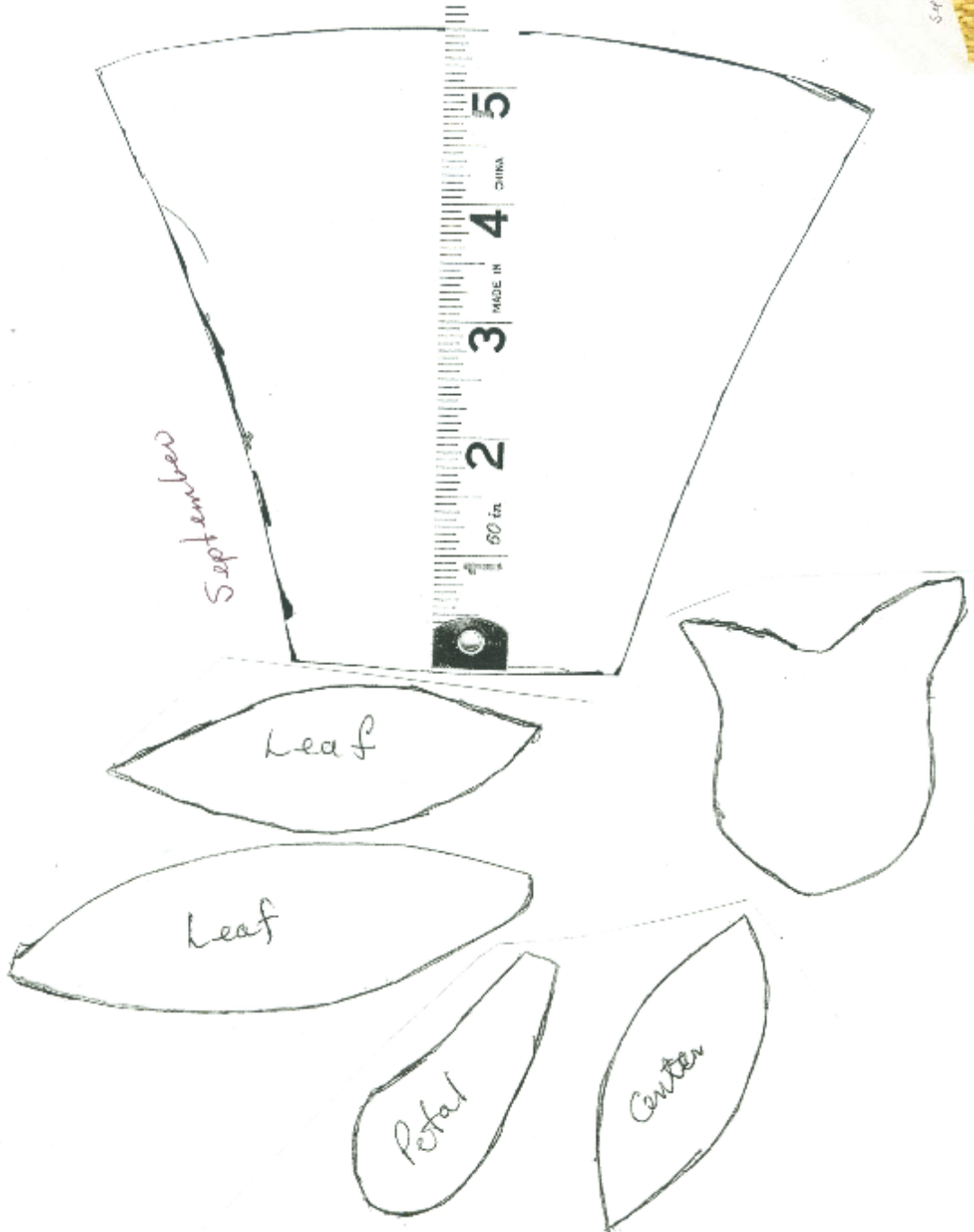
Basket quilt block: September

This is an appliquéd block. Enlarge the basket to a height of 5½” for a 10” block. If you are doing hand appliqué, add 3/16” allowance for turn under. The flowers and leaves are in proportion for the block.

The handle is a bias strip 1” wide x 13” long. Position it and sew it on with the basket body.

For the large flower cut 2 circles about 3”. Sew together right sides facing. Cut a slit in the back of one and turn right side out. Press and sew in place with French knots or whatever stitch you wish. The tulip middle petal is made by folding a 1½” square and positioning it in place, trimming excess as needed.

The flower petals are sewn in place over the leaves and the center sewn over them. Use a decorative stitch on the center. Embroider stems for the flowers as you wish.



Costume and Textiles Collectibles Evaluation Day at Manhattan Arts Center

The Costume and Textile Collectibles Evaluation Day will provide an opportunity to have heirloom and collectible textiles, ethnic clothing, quilts, needlework, lace, vintage clothing, folk art textiles, and military uniforms identified and verbally appraised. Experts will be available to evaluate items at the Manhattan Art Center, **Saturday, August 16th from 10 a.m. until 4 p.m.**

Carol Elmore will identify quilts and give verbal appraisals. She has been an AQS Certified Quilt Appraiser since 1995 and has served as a quilt show judge in Oklahoma, Texas, and Arkansas. She has been making quilts for over 30 years, lectures on quilt history. Carol has traveled to France, Great Britain and Wales studying textiles and quilts.

Ronna Roberson has been active in creative fiber arts for over 40 years and enjoys learning, sharing and creating techniques to use fibers, from very fine threads used for tatting and bobbin lace making to yarns and other fibers used for knitting and weaving. She has taught tatting since 1970 and bobbin lace making since 1983. She also teaches Tenerife, Battenberg lace and pine needle basketry. Ronna is active in Sunflower Lacers, International Old Lacers, Inc., KPQG and Manhattan Area Weavers and Spinners.

Joycelyn Falsken will offer her expertise for evaluations relating to documenting provenance

and preserving textiles. Joycelyn earned a B.A. and M.A. from San Francisco State University and a Ph.D. focusing on dress history from the Ohio State University where she was also the Collections Manager for The Historic Costumes & Textiles Collections. Joycelyn teaches pattern development (manual and computer-aided), apparel construction and pre-production in the Department of Human Ecology, Kansas State University Department of Apparel, Textiles and Interior Design.

Barry Michie will be available to evaluate or educate you about old military uniforms, hats, shoes, ribbons, etc. from any war.

This event is co-sponsored by Friends of the Costume and Textile Museum and the Dept. of Apparel, Textiles, and Interior Design at KSU as a fundraising event for the Costume and Textile Museum. It is open to the general public. A \$10.00 donation is recommended and will go towards maintaining the important collections in the Costume and Textile Museum.



Dona Koster's "Itty Bitty Hodge-podge."



Carol Pacey's "herky jerky" method of appliqué

KONZA PRAIRIE QUILTERS' GUILD
BOX 271
MANHATTAN KS 66505-0271

www.kpqg.com



OODLES OF DOODLES QUILTING

Monthly specials - August 10% off
on log cabin

Shop Hours—Mon-Tues-Wed 9-2

Thur-Fri closed

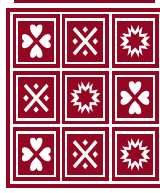
Sat 10-5

Sun 1-5

16140 Homestead Rd., Riley, KS 66531

phone: 785-293-5546

E-mail: oodles-of-doodles@hotmail.com



Carol H. Elmore

**Quilt and Quilted Textile
Appraisals, Lectures, and Workshops**

Written and Oral Appraisals of antique quilts,
contemporary quilts, & other quilted textiles for:

Insurance replacement value,

Fair market value, & Donation value

Carol is a certified American Quilter's Society Appraiser.

Appointments available for home, quilting groups, coffee
groups, or others. All appraisals are confidential

Call (785) 537-7221

Reminder: to sell items at the guild meeting, call
Margie Young 539-2063, to arrange for the room.



The *Prairie Pointer* is the monthly newsletter of Konza Prairie Quilters' Guild. Membership is open to all those interested in quilts and quilting. Yearly dues are \$35 and include 12 Opportunity Tickets, admission to all meetings, monthly newsletter, access to library materials, block of the month patterns, and opportunity to participate in workshops, field trips and public events. Guests are welcome to attend twice before joining.