

March 12, 2007

Meeting second Monday
of each month at
St. Thomas More
Catholic Church
2900 Kimball Ave
Manhattan, Kansas

Social time at 8:30 a.m.;
meeting begins at 9 a.m.

www.kpqg.com

KONZA PRAIRIE QUILTERS' GUILD NEWSLETTER
EDITOR: JENNIE BURDEN

Prairie Pointer

Bring Fat Quarters and Get Ready to Play Bingo

March 12 is Bingo Day! Bring up to 3 fat quarters for your entry fee. Each fat quarter buys one Bingo card (a limited number of fat quarters will be available to buy, or contribute \$1/card). We will be playing for \$20 gift certificates to the Bernina Shoppe, All About Quilts and JoAnn Fabrics. The last game will be for all the fat quarters. Come and have some fun!

April 9 we have sisters Sue Chafee and Cathy Audley from Overland Park, KS, giving a lecture

(Continued on page 5)



Phyllis Norton and Dona Koster made the top for our 2007 Opportunity Quilt in a snowball and nine-patch pattern.



Speaker Jenny Foltz shows her Crayola challenge quilt.

March Refreshments

Please be sure to bring refreshments during your assigned month or trade with someone else who can.

- Carol Dutton
- Gayle Edmiston
- Lana Ellis
- Carol Elmore
- Dorine Elsea
- Anne Emerson
- Arrilla Fedde
- Carolyn Fellows

in like a



Prez Sez

Barb is asking that, instead of making President's Quilt Blocks for her, we do something different this year. In recognition of the many years of service to the guild by Treasurer Twila Hoffman and Newsletter Editor Jennie Burden, members are asked to make a block for them instead. Twila's and Jennie's preferences for color, size and pattern will be printed in next month's newsletter.



Happy Birthday: Kathryn Wilson, Mary Jo Kurtz, Mary Jo Harbour.

Member Profile: Margie Young

Margie Young is a Manhattan hometown gal. She has a degree from KSU in elementary education. Margie has been married to Ron for 50 years and they have 6 children with 11 grandkids who range in age from 4 to 23.

She has been on the emergency shelter's board for 5 years and helps on church committees.

Margie has been very active in guild, being president, program chair, member-at-large, chair of Pumpkin Patch, spring quilt show and luncheon, refreshment committee and has hosted speakers. She's not sure the year she joined but it was 25 or 30 years ago.

She learned to quilt through classes and with the help of Edé Radenberg. Her favorite project is a full-sized quilt with Santa appliqué, all done by hand. She prefers appliqué items and likes both machine and hand projects. She finds quilting peaceful but has no special pattern she really wants to make—just whatever catches her eye.



March Birthdays

Marilyn Horvath	9	Kathryn Wilson	22
Eunice Bradley	14	Mary Jo Harbour	24
Betty Frank	17	Joyce Chalkley	24
Shirley Benteman	20	Doris Hofman	25
Mary Jo Kurtz	21	Ann Langham	25
		Jeanne Powell	30

Directory additions

New Member:

Rachel Moreland, 847 Mission Ave, Manhattan 66502, 539-8713, email Moreland@ksu.edu, born April 10.

Renewing members:

Jane Elliott, 17025 Mariadahl Rd, Olsburg 66520-9753, 468-3373, email relliott@flinthills.com, born July 12.

Carol Hoogheem, PO Box 797 - 327 Shetland Cir, Ogden 66517, 539-7080, email hoogy@cox.net, born Aug 2.

Betty Young, 1825 Leavenworth, Manhattan 66502, 539-1457, born Sep 1.

E-mail changes:

Toni Haukom smokieblu@kansas.net

Bonnie Olsen bjolsen@TwinValley.net

Taste-Test

A representative from NutriJoy will bring CalC samples for us to taste-test at the March meeting. Guild will earn a few bucks (\$4-\$6, I think) for each participant. She will be set up in the "sales" room before guild meeting and during the break. CalC is a calcium-enriched fruit drink that was developed at KSU's College of Human Ecology.

Patchwork Pieces

Every Thursday from 11 am-3 pm a group meets at the Riley County Senior Center to sew, quilt and visit.

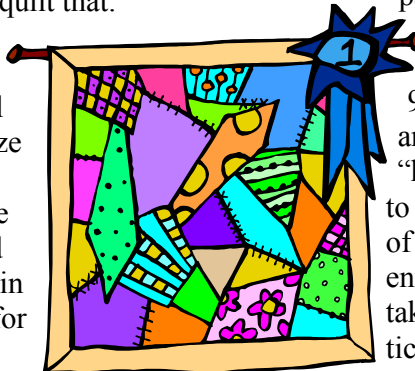
Every Tuesday there will be a Quilts From the Heart work session at the Bernina Shoppe in West-loop.

Sunshine and Shadows

Please send notices for Sunshine and Shadows to jennieb53@cox.net, call 539-1204, or submit in writing at guild meetings.

FAQs (Frequently Asked Questions) About the Stars of the Prairie Quilt Show

1. When is it? Friday-Saturday, 20-21 April 2007.
2. Can I enter a quilt? Since the quilt show is being hosted by the Konza Prairie and Prairie Star Quilters' Guilds, any member of either guild can enter quilts. These can be quilts made by and/or owned by a member, or sponsored by a member if you have a friend or family member with a quilt you think is appropriate for the show.
3. What kind of quilts are you looking for? First, your challenge quilts from 2006 and 2007, any completed class/workshop items from the past 2 years, Opportunity Quilts from 2005 and 2006, Presidents' quilts that have not been previously shown, or any completed block of the month quilts. Generally, we are looking for any "not previously shown" quilts that would be interesting, fun, whimsical, beautiful, antiques in good condition, or items that might inspire someone to say "I would like to quilt that."
4. How many quilts can I enter? Tricky question. We have limited space, but we want to fill all of it. Size matters; a queen size quilt is equivalent in space to 4 crib size quilts. If you enter more than an equivalent of 2 full sized quilts, then please number them in the priority that you would like for them to be included in the show. After the entry deadline of 9 April, we can let you know if we don't have the space for all of them. If we don't have enough quilts, we'll send out an "all call" for more.
5. How do I enter a quilt? Fill out the entry form (in the newsletter, at www.kpqg.com and available at the meetings) and turn it in to Robbie Courts, Lois Morrison or the drop box at the guild meetings in March or April. The deadline for quilt entries is the April 9th meeting. This will allow us time to make sure we have the right amount of quilts and type up the quilt histories (from the forms) for the show.
6. When and where do I need to bring the quilts? Our first preference is for you to drop them off at 1st Presbyterian Church between 8-9 AM Friday, April 20th—they must be hung before the show starts at noon. Otherwise, drop them off April 15-19 at one of the following in Manhattan: Cindy Ross, 808 Mimosa Ln, 537-9341; Barb Warner, 1907 Bluestem Terrace, 776-6212; Jeanne Powell, 203 N. Juliette. If the above don't work for you, bring them to the April 9th meeting and give to Robbie.
7. Will the quilts be judged? No, we are showing the quilts to share our love of quilting with the surrounding community (so your quilts do not need to be perfect). Attendees can vote for their favorite quilt on Friday and Saturday, and we'll announce "Viewer's Choice" Saturday around noon.
8. Does my quilt need a sleeve? If your quilt is crib sized or smaller, we can pin it to sheets, and it does not have to have a sleeve. If your quilt is twin sized or larger, it will need to have a sleeve, so that we can hang it appropriately to display it. There are instructions for adding a sleeve (both before it is bound or after the binding is on) in the February newsletter. The quilts will be hanging on a 2 inch diameter rod, so the sleeve should be large enough to easily go on and off that. A few quilts can be partially displayed (folded) on free standing quilt holders and would not require sleeves.
9. Do I have to pay to get in? If you are a guild member, you are also the "hostess" of the show, and are expected to contribute in some way to the success of the show. This can be done by entering a quilt, bringing baked goods, taking a shift during the show (entrance tickets, helping with the Goody Bar, being a white glove lady, helping with set up or clean up). When you come to the show, please let the ticket taker know that you are a member and how you have helped—that is your entrance fee! Others who are there just to enjoy the show will pay a \$3 entry fee.
10. How can I help? As you can see from question #9, there are a variety of tasks that you can help with. Many ladies have been working hard already, and can use your help putting out flyers and bookmark advertisements at all of the places you go. Sign up sheets for baked goods and shifts will be available at the March and April meetings—please sign up. Also, please wear your guild nametag to the show; if anyone at the show has a question about the guild, they can identify you. Susie Weir is still looking for opportunity prizes, if you have something to donate. See Eloise Brown if you want to do a short demonstration on a relevant topic. Fill out your entry forms NOW! Finally, come to the quilt show and bring a friend!



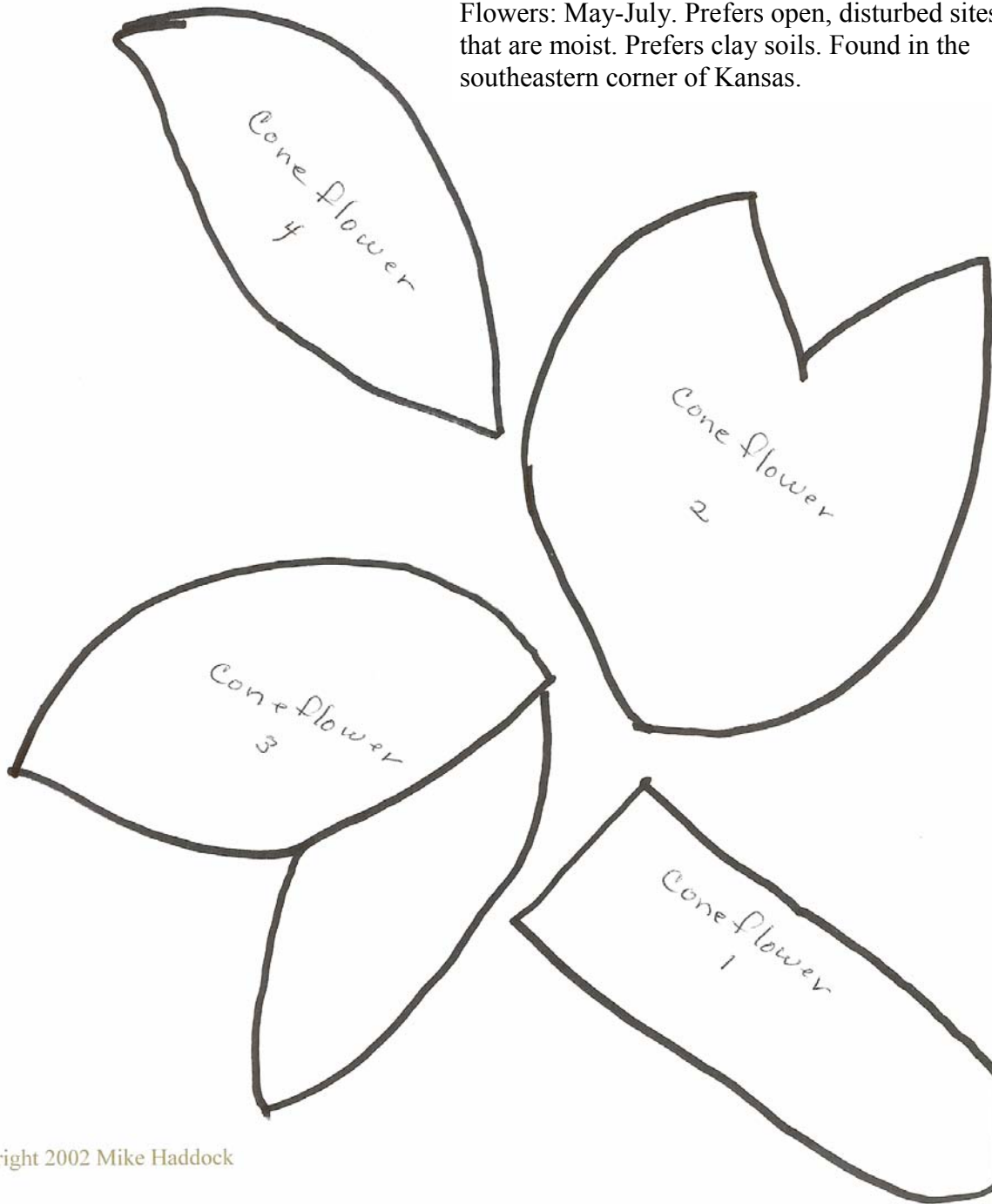
Robbie Courts, 785-784-8157
mrcourts@allegiance.tv

April Block of the Month: Coneflower



Block size is up to your discretion. Norma is using 10½” squares (before finishing). The ruler along the side is to help you scale your pattern. These patterns can be made any size with any technique. If an 8” x 8” block works better for you, use that. These are wildflowers and many sizes differ in different places. Just make them exciting.

Clasping coneflower: *Dracopis amplexicaulis* (Vahl) Cass. [=*Rudbeckia amplexicaulis* Vahl] Labette County, Kansas, annual. 1-2 feet tall. Flowers: May-July. Prefers open, disturbed sites that are moist. Prefers clay soils. Found in the southeastern corner of Kansas.



Upcoming Programs

(Continued from page 1)

on quilting from sisters' points of view.

May 14 our speaker will be Cathie Hoover from Modesto, California, giving a lecture on "The Color Red."

Cathyie's Monday afternoon workshop is "Tricks Worth Knowing," which teaches binding, mitering and other basic knowledge, with tricks on how to do these things easier.

Tuesday's all-day workshop is "Make a Wild and Crazy Quilt with Curves," focusing on using rick-rack and trims on a fun top. Sign up for these workshops!



"Daddy's Ties" by Gayle Edmiston.

On the Road

Quilt Shows & Events of Interest

- Mar 1-31 Ida Stover Eisenhower Memorial Quilt Show, Abilene. 785-263-2681 or www.heritagecenterdk.com
- Mar 1-Apr 1 Quilters Heaven in 2007 Quilt Show, Walnut Valley Quilt Guild, Winfield Middle School, 130 Biking Blvd, Winfield, KS. Contacts: 620-221-1520 or his@skyerock.net. Guild Website: www.walnutvalleyquilters.com.
- Mar 31-Apr 1 Quilters' Heaven in 2007. Winfield Middle School, 130 N. Viking Blvd, Winfield. Sat 9-5, Sun 12-5. Adm \$5. www.walnutvalleyquilters.com or 620-221-1126. No kids under 6.
- Mar 10 National Quilting Day. Check out www.nqaquilts.org/NatQuiltDay.html.
- April 20-21 "Stars of the Prairie" KPQG Quilt Show, First Presbyterian Church, 801 Leavenworth, Manhattan. Hrs: 12-6 pm Friday, 10am-5pm Saturday. \$3 admission. 785-375-2130.
- Apr 28-29 "30 Years of Quilting Together," Kaw Valley Quilters' Guild Show, Douglas Co. Fairgrounds, 2120 Harper Ave., Lawrence. Mini-quilt auction, vendors. Information: <http://community.lawrence.com/KawValleyQuiltersGuild/>.
- Apr 28-29 Sunflower Quilters' Guild, 25th Anniversary Quilt Show. Iola Middle School, Iola.



Norma Louk's star quilt, a 4-year project.

Resources:

Kansas! Magazine salutes Kansas quilters with a 10-page spread in the Spring 2007 issue now available.

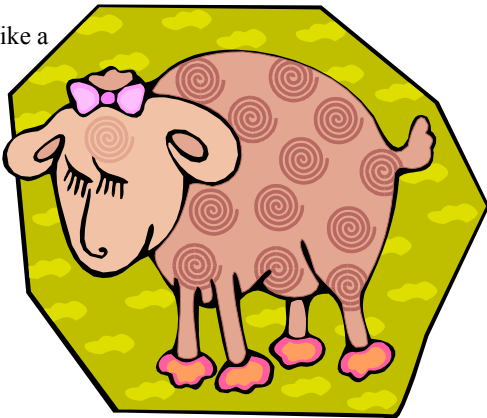
Online quilters' community: Go to www.KanQuilt.com and register for free membership.

According to stories on the internet (<http://www.gardenandhearth.com/FrugalFamily/Walmart-Close-Fabric-Departments.htm>), many Wal-Mart stores are going to close full-service fabric departments and go to pre-cut lengths of fabric or have no fabric at all. Anyone know more about this?

KONZA PRAIRIE QUILTERS' GUILD
 BOX 271
 MANHATTAN KS 66505-0271

www.kpqg.com

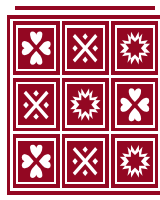
out like a



FOR SALE

For Sale: Singer Steam Press - ironing surface is 10 times the area of a regular iron (17" by 26" at longest point). With the steam and high pressure it works great to press those washed cottons. Works great! \$62 OBO. 785-494-2198
snbjones@wamego.net

Reminder: If you want to sell items at the guild meeting, you need to call Margie Young 539-2063, ahead of time so she can arrange for the room.



Carol H. Elmore
 Quilt and Quilted Textile
 Appraisals, Lectures, and Workshops

Written and Oral Appraisals of antique quilts, contemporary quilts, & other quilted textiles for:
Insurance replacement value,

Fair market value, & Donation value

Carol is a certified American Quilter's Society Appraiser. Appointments available for home, quilting groups, coffee groups, or others. All appraisals are confidential
 Call (785) 537-7221



The *Prairie Pointer* is the monthly newsletter of Konza Prairie Quilters' Guild. Membership is open to all those interested in quilts and quilting. Yearly dues are \$35 and include 12 Opportunity Tickets, admission to all meetings, monthly newsletter, access to library materials, block of the month patterns, and opportunity to participate in workshops, field trips and public events. Guests are welcome to attend twice before joining.