

May 8, 2006

Meeting second Monday of each month at St. Thomas More Catholic Church 2900 Kimball Ave Manhattan, Kansas

Social time at 8:30 a.m.; meeting begins at 9 a.m.

www.kpqg.com

EDITOR:

KONZA PRAIRIE QUILTERS' GUILD NEWSLETTER  
JENNIE BURDEN

# Prairie Pointer

## Crazy Quilting Trunk Show and Workshop on Tap

**May 8:** Judy Oberkrom will present her Crazy Quilting trunk show in the morning and then lead a workshop in the afternoon on the same topic. Her website is at [www.craftyjudy.com](http://www.craftyjudy.com).

**June 12:** Mary Sue Suit will be joining us from Sydney, NE with a trunk show and an afternoon workshop on "Mitering Without Migraines." She will also do another workshop on Tuesday morning, featuring a small project from her book on Crazy Eights. Mary Sue donated a copy of this to our library.

**July 10:** Christmas in July, with multiple hands-on workshops.



### May Refreshments

Please be sure to bring refreshments during your assigned month or trade with someone else who can.

- Suzy Wong
- Gay Youngman
- Jan Zelch
- Pauline Adolph
- Elaine Baxter
- Marcella Bechard
- Virginia Bennett

**Bring address labels for the Opportunity Quilt tickets which will be handed out at the May meeting.**



April speaker Elaine Elliott

### Prez Sez

Dear Quilters,

This month's message is short and sweet: I'm on my way to Paducah for lots of fun, food and quilts! I'll tell you all about it when I get back—Margie





Birthday gals Nelda Warnica and Phyllis Norton

# May Birthdays

|                   |    |
|-------------------|----|
| Phyllis Norton    | 2  |
| Jan Gable         | 3  |
| Carol Sheehe      | 4  |
| Vicki Thomas      | 4  |
| Virginia Bennett  | 6  |
| Rosemary McMullen | 6  |
| Nelda Warnica     | 10 |
| Kay Russell       | 13 |
| Kevin Deets       | 15 |
| Susan Wong        | 24 |
| Mary Anna Wier    | 26 |
| Doris Peters      | 28 |
| Gay Youngman      | 28 |

## Quilts from the Heart Update

I want to thank all the members that drove to Clifton, for the workshop. It was a fun and productive day. The lunch ladies enjoyed serving you. They commented how many members they remember from past workday and how much they like to help tie the quilts. It is your dedication and all the work you do that makes this project possible. I was glad that Norma called me and reported that you all got home safe. Thank you. Bonnie



Correction to directory:  
[edmiston37@earthlink.net](mailto:edmiston37@earthlink.net) is the correct email for Gayle Edmiston.

## Patchwork Pieces

**2006 Officers** Co-President: Margie Young and Cindy Ross  
 Program Chair: Ronna Robertson  
 Program Chair-select: Nancy Graves and Judi Robb  
 Secretary: Sue Jones  
 Treasurer/Directory: Twila Hoffman  
 Photographer: Shari Reeves  
 Past President: Charlotte Herr  
 Members-at-large: Mary Jo Kurtz, Harriette Janke, Barb Warner  
 Newsletter: Jennie Burden; Circulation: Jeanne Powell  
**Committees:** Library: Kay Hummels, Jan Carl, Callie Hildebrand, Kevin Deets, Carol Sheehe; Opportunity Quilt: Nancy Venburg, Suzie Wong; Opp Quilt Tickets: Virginia Cleek, Mary Jo Harbour; Opp Quilt location: Theresa Gunther;  
Refreshments: Set-up: Barb Warner, Sharon Pollman, Jan Klink; clean-up: Rosie McMullen; Greeters: Nadith Reinhardt, Jan Gable, Barbara Naughton; Block of the Month: Dee Gerardy; Challenge: Chris Moore; Quilts From the Heart: Bonnie Olsen, Marcella Bechard, Donna Dawson, Norma Larson; Mini-Quilt Auction: Harriette Janke, with Judi Robb and Nancy Graves, advertising; Nancy Venberg, favors; and Margie Young, tickets.

### Cindy's President's Block:

Using 1930s reproduction pastels and butterflies, make a 10½" block (will finish to 10" in her quilt) for Cindy's President's Block Quilt. Remember to sign your name.

**Every Thursday** from 11 am-3 pm a group meets at the Riley County Senior Center to sew, quilt and visit. Lunch is on your own, except the last Thursday of the month, when it's potluck. Contact: Susie (Weir, Wong or Sapp.)

The **4th Monday** group no longer meets.



## Member Profile: Cathy Cholick

Cathy Cholick joined guild in 2004, shortly after she moved to Manhattan. She jumped right in and got involved, and is working her way in to assuming the lead role in the Quilts From the

Heart Project.

Cathy was born in Portland, OR and she holds a BS in Education from Oregon State. She is married to Fred (34 years) and they have two children. Her last name is pronounced "chaw - lick."

Besides quilting, Cathy enjoys reading and cooking. She learned how to quilt in 1986 from a friend. She likes quilting because it is creative. She says her favorite project that is completed is all and none, take your pick! She likes pieced quilts and machine quilting.

Cathy would like to learn everything and anything she can. Her favorite guild meeting was Las Vegas Strippers. She is always trying new ideas from the multitude of quilt books she either has or checks out from the guild library. Recently she taught the mystery quilt workshop for the guild.



## Last Call for Mini-Quilts for Auction

Is your quilt for the Mini Auction just about done? All the quilts that are *finished* and ready for the auction will be hung at the May meeting and be eligible to receive a Viewer's Choice award.

More quilts are needed to make the quilt sale a success. Please help to bring our beautiful quilts to the attention of the public by making a small quilt, then selling tickets to your friends.

Workers will be needed, so please be thinking about what you could do to help. We will need: People at the sign-in table, people to show quilts being sold (daughters of members?), bid spotters, Opportunity Quilt ticket sellers, someone to decorate the quilt stands, type up the booklets, write script, and pick up the quilt stands and assemble them at the Country Club.

I'll be passing around a sign-up sheet at the May meeting. If you'd like a particular job, call me at 539-0865. Be the first to get your best selection!!

If my husband takes your message for me, spell your name and make sure he gets it right. He's a good secretary, but not an experienced one! Harriette Janke



A sampling of some of the quilts completed in the April mystery quilt workshop that Cathy Cholick held.

**Sunshine and Shadows**  
 Sue Jones' husband Bruce is having ro-  
 tator cuff surgery April 28.

Please send notices for Sunshine and Shad-  
 ows to [jennieb53@cox.net](mailto:jennieb53@cox.net), call 539-1204, or  
 submit in writing at guild meetings.

**Grandmother's Flower Garden**

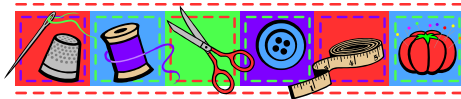
KPQG Mini-Quilt Auction and Luncheon

**Saturday, June 3**  
**11 am**  
**Manhattan Country Club**  
 Tickets \$13.50

**call Margie Young 539-2063**



Bull's Eye Quilt by Nancy Roth



On the Road

**Quilt Shows and Events of Interest in 2006**

- May 10-13 Putting on the Ritz, 10th Machine Quilters Showcase, Overland Park Conv. Ctr.  
[www.imqa.org](http://www.imqa.org).
- May 13 Heirlooms of Tomorrow. Kaw Valley Quilters Guild 2006 show. 10-7, admission \$3.  
[Http://community.lawrence.com/KawValleyQuiltersGuild/](http://community.lawrence.com/KawValleyQuiltersGuild/). Mini-quilt Auction, demos,  
 vendors. Featured quilter is Terry Clothier Thompson.
- June 2-4 KQO Spring Retreat
- June 3 Grandmother's Flower Garden, KPQG Mini-quilt auction and luncheon. Manhattan Coun-  
 try Club. 11 a.m. Lunch \$13.50, reservations required. For tickets, email Margie Young at  
[chipin@flinthills.com](mailto:chipin@flinthills.com).
- June 3 Quilts Across the Prairie, Holy Family Church, Marion KS.
- June 8-11 Rural Kansas Shop Hop.
- June 17 Quilters Silver Jubilee, Quilters Guild of Parsons. Phillips Recreation Center (across from  
 Forest Park). 9-4.
- Jun 23-25 Common Threads, Prairie Quilt Guild quilt show. Century II—ExpoHall, Wichita. Admis-  
 sion \$7.50/day. [www.wichitatix.com](http://www.wichitatix.com), or [www.pqgks.com/quiltshow.html](http://www.pqgks.com/quiltshow.html) or 316-684-  
 5855.
- Sep 16-17 Reaching for the Stars. Kansas Capital Quilters Guild annual show, The Woman's Club,  
 5221 SW West Drive, Topeka. Admission \$5. KCQA, PO Box 3918, Topeka KS 66604  
 or [TopekaQuiltShow@hotmail.com](mailto:TopekaQuiltShow@hotmail.com).

*(Disclaimer: Information for "On the Road" is gleaned from other sources. You may wish to confirm dates, times and places of quilt shows before traveling to them, as errors sometimes get inserted.)*



Serpentine Grandmother's Fans by Carolyn Fellows.

### California Casserole

Serves 8-10

**¼ cup butter or margarine**

**1 cup chopped onions**

saute: **4 cups fresh cooked rice** (I use Minute Rice)

**2 cups of sour cream**

**1 cup cottage cheese**

**1 lg bay leaf, crumpled**

**½ tsp salt**

**7 oz. can diced Ortega mild green chilies**

Mix well. Then add the sauted onions and **2 cups of grated cheddar cheese**. Mix.

Spray a 12x8x2 casserole with **Pam**, pour in mixture. Bake 375° for 25 minutes or until lightly browned. Top with **chopped parsley** if desired.

This recipe provided by Bonnie Olson, who served it at the QFH workshop. She said, "This is so good and easy. I have added summer squash, red peppers and grated carrots to this also. Hope you all enjoy - Bonnie"

Cathy Cholick made this cowboy-themed quilt as a fund raiser for the College of Agriculture.



### Do You Love Butterflies on Quilts?

After seeing the quilt blocks being made for Cindy Ross, several guild members have expressed an interest in compiling a collection of butterfly quilt patterns. If you would be interested in sharing any butterfly patterns you have, please bring a copy of your pattern to Twila Hoffman. Let Twila know if you would like a copy of the butterfly collection. There will be a small charge to cover the cost of making the copies.



Norma Larson models a jacket she made from pinked-edge fabric pieces sewn down to a ready-made sweatshirt.

## June Block of the Month: Double X

Cut the Following:

Light Fabric:

\*Cut 4 squares -  $3\frac{1}{2}$ " x  $3\frac{1}{2}$ "

\*Cut 3 squares -  $3\frac{7}{8}$ " x  $3\frac{7}{8}$ "

\*Cut 2 squares -  $3\frac{7}{8}$ " x  $3\frac{7}{8}$ " - cut these two squares on the diagonal to yield 4 triangles

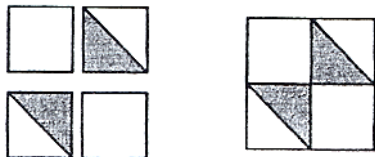
Dark Fabric:

\*Cut 3 squares -  $3\frac{7}{8}$ " x  $3\frac{7}{8}$ "

\*Cut 1 square -  $6\frac{7}{8}$ " x  $6\frac{7}{8}$ " - cut this square on the diagonal to yield 2 triangles

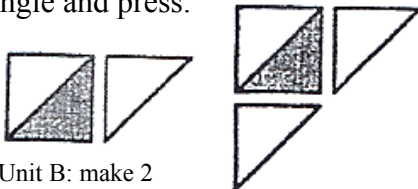
Make half-square triangle units by layering a light  $3\frac{7}{8}$ " square and a dark  $3\frac{7}{8}$ " square, right sides together. Draw a diagonal line from corner to corner and sew  $\frac{1}{4}$ " on each side of the line. Cut between the stitching lines on the drawn line. Press the seams toward the dark fabric. Prepare six half-square triangle units. The half-square triangles should measure  $3\frac{1}{2}$ ".

Use two of the half-square triangles and two of the light  $3\frac{1}{2}$ " squares to assemble the following corner unit. This unit should measure  $6\frac{1}{2}$ ".

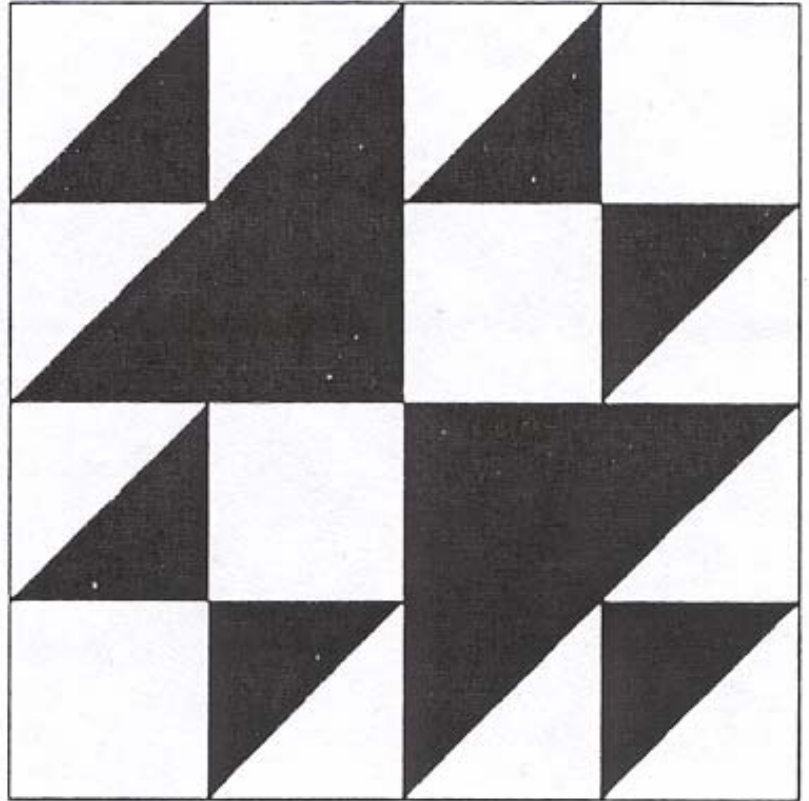


Unit A: make 2

Sew the straight edge of a light triangle to the dark edge of a half-square triangle, right sides together. Be sure to use the straight edge and not the bias edge of the light triangle. Press the seam. Sew another light triangle to the adjacent corner of the dark triangle of the same half-square triangle and press.



Unit B: make 2

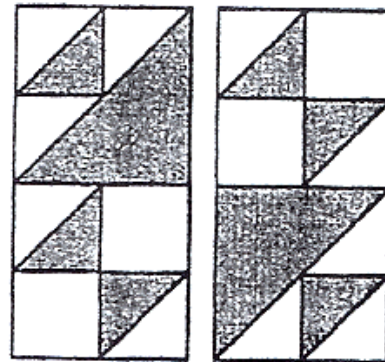


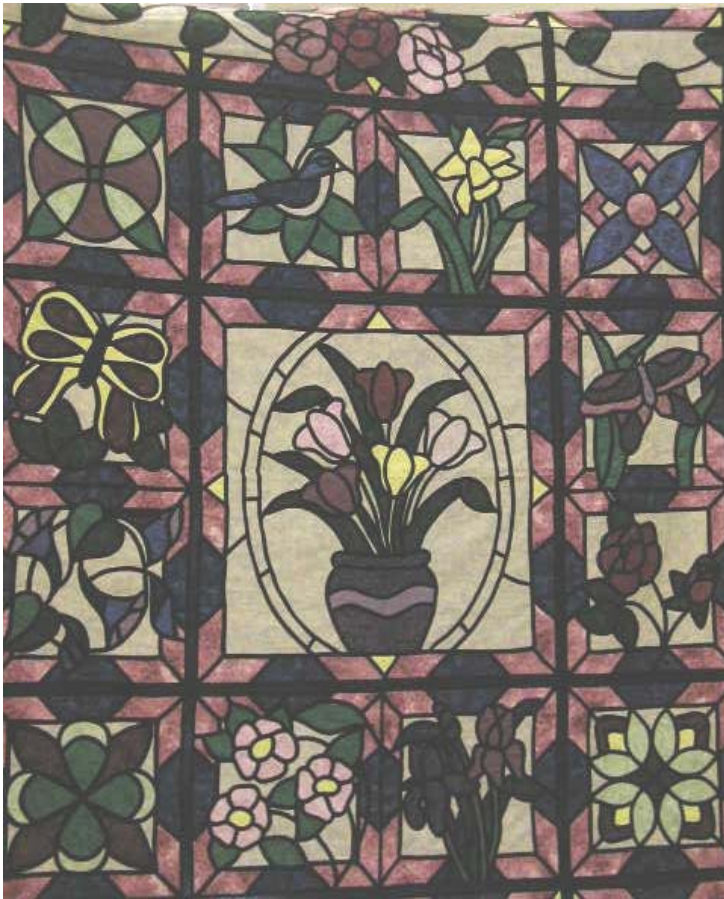
Place Unit B on top of the dark triangle cut from the  $6\frac{7}{8}$ " square, right sides together. Stitch and press toward the dark triangle. This unit should measure  $6\frac{1}{2}$ ".



Unit C: make 2

Refer to the block diagram to arrange the two A units and the two C units to form the block. Your block should measure  $12\frac{1}{2}$ ".





Elaine Elliott's stained glass flowers quilt.

### Katie's Korner

Katie, What is the best way to attach borders to my quilt?

- ~ After pressing and squaring up your finished quilt top, measure through the center of the quilt - top to bottom.
- ~ Cut two borders this length and the width you want the borders.
- ~ Fold the border strips in half, then in half again, to find the center and quarters of the border.
- ~ Do the same with the quilt top. Mark with pins at these point.
- ~ Pin the border to the quilt top, matching the pins, raw edges and ends.
- ~ If you notice fullness in either the border or the quilt top, place that against the feed dogs on your sewing machine. It will help ease in fullness.
- ~ After sewing on the side borders, measure again through the center of the quilt top including the recently attached borders.
- ~ Cut the top and bottom borders that measurement.
- ~ Find the centers and quarters of the borders and the quilt top and attach, easing in fullness.
- ~ You now have borders!! — Katie

### **Dilbert's Rules of Order**

*I love deadlines...especially the whooshing sound they make as they fly by!*

Don't let the deadline for making your mini-quilt fly by. Please plan to bring your completed mini to the May meeting, to give the organizers time to get everything entered in the auction book, and to plan the narrative.

Remember, you can also donate something you made in the past—old or new, we love 'em all!

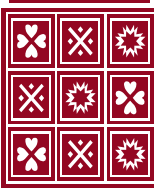


Betty Shawgo and her Baby Farm Animal quilt.

KONZA PRAIRIE QUILTERS' GUILD  
 BOX 271  
 MANHATTAN KS 66505-0271

www.kpqq.com





**Carol H. Elmore**

**Quilt and Quilted Textile  
Appraisals, Lectures, and Workshops**

Written and Oral Appraisals of antique quilts,  
contemporary quilts, & other quilted textiles for:  
*Insurance replacement value,  
Fair market value, & Donation value*

Carol is a certified American Quilter's Society Appraiser.  
Appointments available for home, quilting groups, coffee  
groups, or others. All appraisals are confidential  
Call (785) 537-7221



The *Prairie Pointer* is the monthly newsletter of Konza Prairie Quilters' Guild. Membership is open to all those interested in quilts and quilting. Yearly dues are \$35 and include 12 Opportunity Tickets, admission to all meetings, monthly newsletter, access to library materials, block of the month patterns, and opportunity to participate in workshops, field trips and public events. Guests are welcome and may attend twice before joining.