

July 11, 2005

Meeting second Monday
of each month at
St. Thomas More
Catholic Church
2900 Kimball Ave
Manhattan, Kansas

Social time at 8:30 a.m.;
meeting begins at 9 a.m.

www.kpqg.com

KONZA PRAIRIE QUILTERS' GUILD NEWSLETTER

Prairie Pointer

July 11—Jeanne Poore, lecturer, teacher, judge and appraiser, designer and author will present "All Star Review," a trunk show of star quilts with history and patterns. Her website is jepodesigns@earthlink.net.

Jeanne was born in Washington County, Kansas, in her maternal grandparents' farm home. Both her maternal and paternal grandmothers were quilters and her great grandmother also quilted. She grew up in Kansas City, Kan., and has lived in Overland Park for 33 years.

Jeanne didn't get into organized quilting until 1986, when she joined her first guild. She likes all the facets of the quilt making process, from designing to the hand quilting.

Jeanne is an expert on the Star quilt patterns and has made the cover of *Quilting Today Magazine* twice! The most recent is her

(Continued on page 4)



Carolyn Dreiling shared this embroidered baby quilt to be used as a fund raiser for the Relay for Life cancel awareness event.

Celebrate



Freedom!

Prez Sez

I always like to go to quilt shows. I especially enjoyed my short trip to get to ours. The quilt show was an outstanding volunteer-run show. Well done! Thanks to all for your work in making it a success.

Our next year's major fund raiser is our mini quilt auction, and it's time to start planning for it. Step one: finding a chairperson or co-chairpersons. If this is the challenge that you have been waiting for, please call me at 5394374. We need to have this in place when we leave the July meeting.

The guild board agreed to fund several projects. We will continue our subscription to *Quilter's Newsletter Magazine*; it is delivered to the Manhattan Public Library for you and the rest of our community. We voted to continue this year to give prize money to the Riley County Fair for a youth award for quilting. We will also co-sponsor a quilt show at the Manhattan Art Center which runs July 24 until September. In the front gallery our own Jane Elliott will be featured. The

(Continued on page 4)

July Refreshments
 Chris Moore
 Lois Morrison
 Ellie Morton
 Barbara Naughton
 Fran Nedwed
 Barbara Nelson
 Nayola Norris
 Phyllis Norton



Members celebrating birthdays in July are: Jean Parker, Opal Kennitz, Nadith Reinhardt, Ethel Houtz, Robbie Courts, Norma Louk, Toni Haukoum and Karen Spaeth.

Did You Know?

The directions given on the “Caveman Style Quilting” video are printed out at the following website: http://www.hgtv.com/hgtv/shows_qlt/episode/0,1806,HGTV_3876_23307,00.html

Either enter the above, or go to www.hgtv.com. Select Simply Quilts, then search for Ricky Timms, episode 910.

We will have paper copies in July for those without computer access.

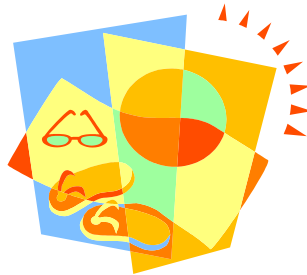


July Birthdays

| | | | |
|------------------|---|----------------|----|
| Jean Parker | 1 | Jane Elliott | 11 |
| Robbie Courts | 2 | Karen Spaeth | 11 |
| Dixie Reed | 3 | Gayle Edmiston | 12 |
| Nadith Reinhardt | 4 | Kay Olson | 13 |
| Dorothy Bramhall | 5 | Carol Pacey | 18 |
| Toni Haukoum | 7 | Norma Louk | 19 |
| Sue Jones | 7 | Lisa Lang | 22 |
| Opal Kennitz | 7 | Ethel Houtz | 30 |
| Edé Radenberg | 7 | | |

Patchwork Pieces

2005 Officers President: Charlotte Herr
 Program Chair: Cindy Ross
 Program Chair-select: Ronna Robertson
 Secretary: Carolyn Dreiling
 Treasurer: Twila Hoffman
 Photographer: Shari Reeves
 Past President: Whitney Short
 Members-at-large: Mary Jo Kurtz,
 Margie Young, Nan Smail



Newsletter: Jennie Burden; Circulation: Jeanne Powell
Committees: Library: Kay Hummels, Jan Carl, Callie Hildebrand, Doris Beckenhauer; Opportunity Quilt: Margie Young, Harriette Janke; Opportunity Quilt Tickets: Virginia Cleek, Mary Jo Harbour; Refreshments set-up: Barb Warner, Sharon Pollman, Jan Klink; clean-up: Rosie McMullen; Greeters: Norma Larson, Phyllis Norton, Nancy Parker; Block of the Month: Harriette Janke; Challenge: Lana Ellis; Directory: Twila Hoffman; Quilts From the Heart: Bonnie Olsen, Marcella Bechard, Donna Dawson; Quilting Location: Karen Malone; Auction: Dona Koster, Susie Weir.

Charlotte’s President’s Block:

10½” finished square, containing purple and any colors but black or white, signed or use Charlotte’s purple Pigma pen.

Every Thursday from 11 am-3 pm a group meets at the Riley County Senior Center to sew, quilt and visit. Lunch is on your own, except the last Thursday of the month, when it’s potluck. Contact: Susie (Weir, Wong or Sapp.)
 The **4th Monday** group meets 9:30-3:30 at the clubhouse of the Westbank Townhouses on Rockridge Court. Call Margie Young to sign up for potluck lunch items.

Let's go to Paducah! Guild Trip Set for April 2006

The American Quilt Society's national quilt show will take place in April, 2006, in Paducah, Kentucky. Mary Jo Kurtz, on behalf of the quilt guild board, has worked with Jade Travel in Manhattan to arrange a package for our guild to attend April 27-30. She's done a great job of arranging a very reasonably-priced package. Below is the tentative itinerary. (The AQS brochure will not come out until November so we don't have specific information about activities, workshops, lectures, etc.)

Thursday, April 27

Leave Manhattan on Arrow Bus Lines. Arrive in Paducah that evening. We will stay at the Ken-Bar Lodge in Gilbertsville, Ky., 21 miles east of Paducah.

Friday-Saturday, April 28-29

Our bus will take us to the Paducah Quilt Show and other related places in the city.

Sunday, April 30

Return to Manhattan

Price Per Person:

| | | |
|-------------------------|--------------|---|
| Single Occupancy | \$465 | Included: 3 nights lodging, 3 breakfasts, and all bus transportation—from Manhattan to Paducah and return to Manhattan, and local trips between our motel and events in Paducah. |
| Double Occupancy | \$300 | |
| Triple Occupancy | \$255 | |
| Quad Occupancy | \$235 | |

Not included: multi-day admission to the quilt show--\$15 for members of AQS and \$25 for non-members. (Membership in AQS is \$19.95 and there are other discounts available at the show for members so it would seem to be economical to join.)

If you are interested in going please fill out the following information and turn it in with your check for a **\$100 deposit** at our July 11 meeting. Checks should be made out to **Jade Travel**. (We will not be able to use credit cards for the travel package.)

Name _____

Address _____

Phone _____

I would like to room with _____

Circle choice:

Single Occupancy Double Occupancy Triple Occupancy Quad Occupancy

Mary Jo will be available at the July meeting to give more details and answer questions. We need a minimum of 30 to pay for the bus, which has a maximum capacity of 47.

Upcoming Programs

(Continued from page 1)

Morning Star pattern featured in Issue #80.

Her workshop (½ day) will be Star Puzzle.

August: Carol Elmore, a Certified American Quilter's Society Appraiser, will present "Facts and Fallacies of Quilt Appraisals." In July we will draw for two free oral evaluations, which Carol will do at the August meeting. Or, you may sign up in July for oral evaluations (\$25) or written appraisals (\$35.) Carol will return 10% of proceeds for paid appraisals to the guild.

September: Rebecca Slaten, owner of Surfaces, a unique shop in KC, will give a lecture and workshop on fabric stenciling. For the workshop each member brings her own fabric and Rebecca will provide all other supplies. Her website is www.surfacesfinepaint.com.

Prez Sez

(Continued from page 1)

large gallery will have two shows by the Kansas Art Quilters.

The Ricky Timms video was wonderful! If you missed it, it is available for check-out from our guild library. I have finished piecing my version of a "Chantelle." My goal is to have it quilted by our July meeting. It is whimsical and surprisingly easy.

I'm scheduled to be at home for the next month due to a dental project so if I have enough President's blocks, I'm ready to put them together.

— Charlotte

The Kansas State Fair will take place Sept 9-18 in Hutchinson. Quilt entries are due August 15 (free registration). After August 25, registration costs \$25. Twila Hoffman has the book with official rules and forms; also www.kansasstatefair.com has information, or write to 2000 N. Poplar, Hutchinson KS 67502-5598.



On the Road

Quilt Shows and Events of Interest

- July 22 Shawnee Co. Fair Quilt Show, Exhibition Hall, Topeka Expo Centre.
- Aug 9 All-day workday for Quilts from the Heart, Faith United Presbyterian Church, Clifton. Lunch will be provided for those who pre-register. (**Note date change.**)
- Aug 19-21 Quilt show in Clifton. See Bonnie Olson for details.
- Aug 28-Oct 9 Monkey Wrench: New Quilts from an Old Favorite. Traveling exhibit of 18 winning quilts from contest held in Kentucky. Montezuma, Kansas.
- Sept 3-4 Little Balkans Quilt Show.
- Sep 9-18 Kansas State Fair, Hutchinson.
- Sep 17-18 Kansas Capital Quilters Guild 19th annual show: "Quilting forever—Housework whenever." 10-5 Sat, 12-5 Sun; admission \$4. The Woman's Club, 5221 SW West Drive, Topeka. For information, email TopekaQuiltShow@hotmail.com or call 785-256-2464.
- Jul 23-Sep 3 Hokey Pokey, Layers, and Upon Reflection, exhibits by Jane Elias Elliot and Kansas Art Quilters. Opening Saturday, July 23, 3-5 p.m. Manhattan Arts Center, 1520 Poyntz.
- Oct 1-16 "A Harvest of Quilts" Quilters Guild of Greater Kansas City, Crown Center, KCMO.
- Oct 7-9 Central Kansas Quilt Shop Hop.
- Oct 15-16 The Magic of Quilts, Silver Needles Quilt Show, BiCentennial Center, Salina.
- 2006**
- April ? KPQG Mini-quilt auction and luncheon. TBA
- Apr 26-29 KPQG road trip to Paducah.

(Disclaimer: Information for "On the Road" is gleaned from other sources. You may wish to confirm dates, times and places of quilt shows before traveling to them, as errors sometimes get inserted.)



Sue Jones made this Cowboy Shirt quilt.

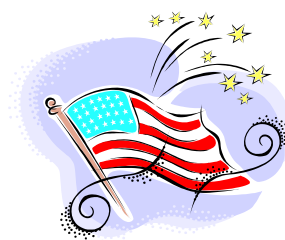
Quilts from the Heart:

Report from Bonnie

At this time we have about 127 quilts finished. Thirty of those were left over from last year'. Donna Dawson, Marcella Bechard and I got together in Clifton and worked on assembling more kits. If you have a kit out, please finish it and turn the quilt in.

I talked with the Crisis Center and they told me they have only a few of the quilts left from the 150 we gave them last year. They also told me that 150 was just about the right number per year.

We have 17 members signed up to come to the August 9 workshop in Clifton. Please bring your favorite working tools. I will have the sign up sheet at the July meeting.



Familiar Face Welcomes All

Phyllis Norton has been a KPQG member for 5 years. She is a greeter and has been on the refreshment and mini-quilt auction committees.

John and Phyllis, married 40 years, have 3 adult children with 5 grandchildren. Phyllis worked for Dillard's for a number of years.

Besides helping with guild, she has volunteered with the hospital auxiliary. She enjoys making quilts



for the Quilts from the Heart project. Phyllis also does cross stitch and gardening.

Phyllis says her mother always quilted. In 2000 Phyllis took a class from Ideas Unlimited and the rest is history. She has made several bed quilts as well as wall hangings and miniatures. She likes traditional quilting by machine. One of her goals is to learn hand quilting.

Phyllis says she really enjoys the meetings and the show-and-tell as well as the programs.



Bonnie Olson made this quilt as a wedding gift for her grandson.

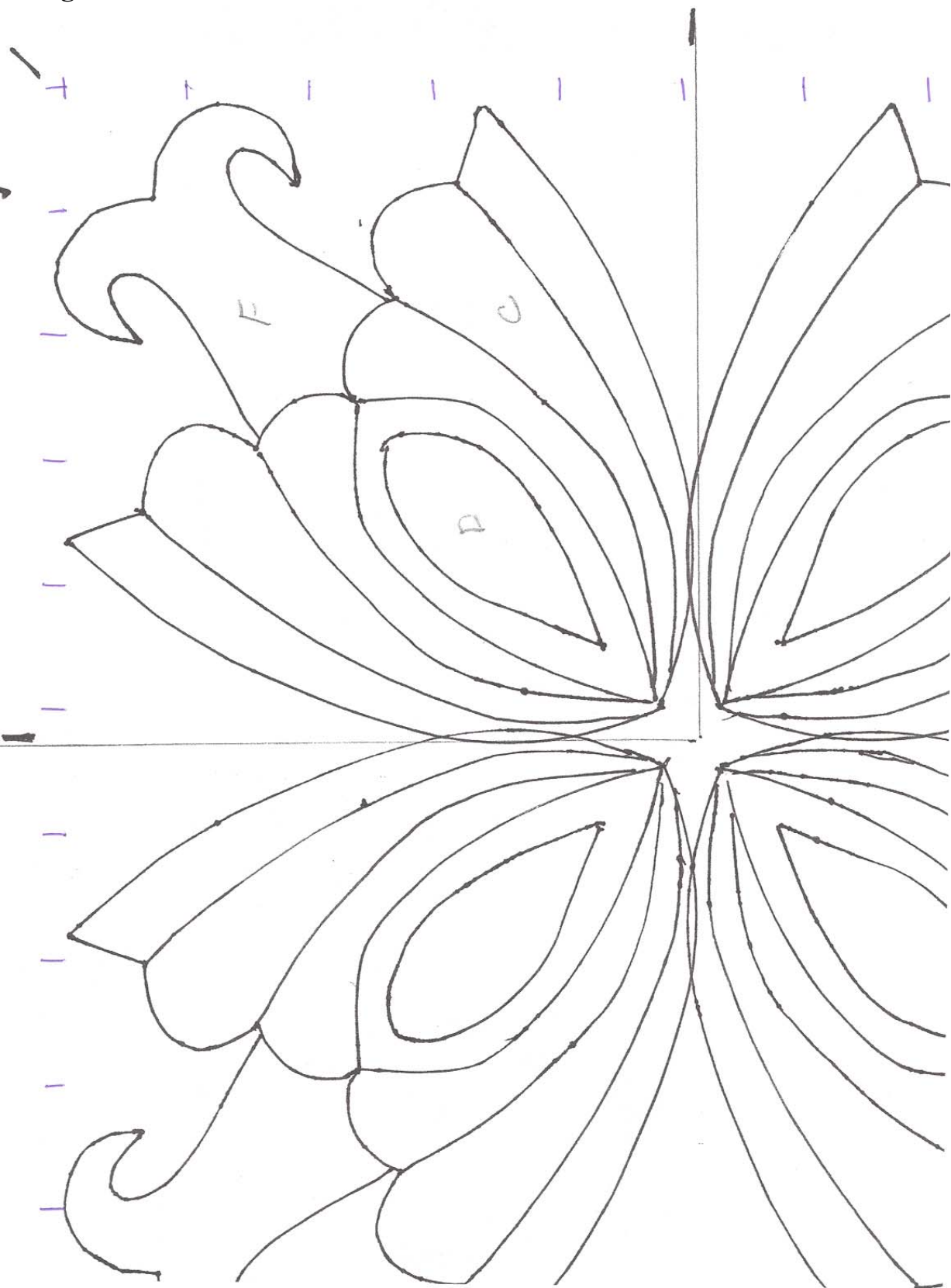


Norma Louk's Butterfly Quilt.

August Block of the Month

July 11, 2005

PRAIRIE POINTER



Page 6

The copying process changes size of pattern; you may need to increase or decrease to fit the block. Note the inch marks—if you adjust the pattern so these are actually 1" apart, you will have the correct size.

Quilts of Valor for Soldiers

The quilt at right that Robbie Courts showed at the June guild meeting has 20 blocks depicting patriotic pictures. The blocks were drawn by 6th grade art class students (all children of soldiers) at Fort Riley Middle School, using fabric crayons or markers. Robbie added sashing, borders and binding. Terre Klipsch from Iowa quilted it with her long arm machine, using variegated red, white, and blue thread and forming a variety of stars, hearts, and fireworks.

Robbie got the idea for the drawings from a story about “State Fair Quilters” in the devotional book What I Learned from God While Quilting by Ruth McHaney Danner and Christine Bolley. It told of a family of quilters who had children draw pictures of what they did at the fair on muslin blocks, and then turned those blocks into quilts for various causes.

For complete information on how to participate, find guidelines, see pictures, and make contacts, go to www.quiltsforsoldiers.com. They are looking for “toppers” to piece the quilts and “long armers” to quilt them. Upon completion, the quilts are sent to chaplains at various military hospitals to be presented to wounded soldiers.



This quilt, made by Robbie Courts with student from Fort Riley Middle School, will go to a wounded soldier from Fort Riley.

Be a Quilt Angel
Turn off cell phones during meetings.

Out and About

Quilters often like to visit different shops when they are traveling. Quilting on the Square is a newly-opened quilt shop in Holton, Kansas. One of their grand opening events will be “Christmas in July,” the week of July 25-30. The shop, opened by Julie Calhahan and Mark and Mary Pfeiler, is located at 108 West 5th Street. Phone number is 785-364-4050.

Hokey Pokey One-woman show by Jane Elias Elliot

Opening Saturday, July 23, 3-5 p.m.

also

Kansas Art Quilters’ “Layers”
and “Upon Reflection”

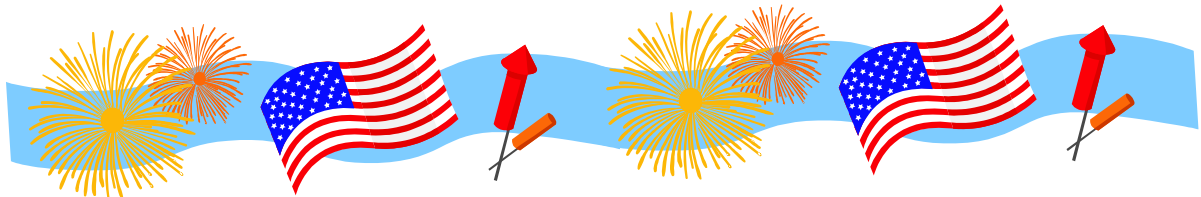
Manhattan Arts Center
1520 Poyntz, Manhattan

Exhibits run July 23—September 3

Sponsored by Konza Prairie Quilters Guild,
Prairie Star Quilt Guild and All About Quilts

KONZA PRAIRIE QUILTERS' GUILD
BOX 271
MANHATTAN KS 66505-0271

www.kpqq.com



Treasure Box scrap quilt made by Twila Hoffman.



Carol H. Elmore

**Quilt and Quilted Textile
Appraisals, Lectures, and Workshops**

Written and Oral Appraisals of antique quilts,
contemporary quilts, & other quilted textiles for:

Insurance replacement value,

Fair market value, & Donation value

Carol is a certified American Quilter's Society Appraiser.

Appointments available for home, quilting groups, coffee
groups, or others. All appraisals are confidential

Call (785) 537-7221



The *Prairie Pointer* is the monthly newsletter of Konza Prairie Quilters' Guild. Membership is open to all those interested in quilts and quilting. Yearly dues are \$35 and include 12 Opportunity Tickets, admission to all meetings, monthly newsletter, access to library materials, block of the month patterns, and opportunity to participate in workshops, field trips and public events. Guests are welcome and may attend twice before joining.