

February 14, 2005

Meeting second Monday of each month at St. Thomas More Catholic Church 2900 Kimball Ave Manhattan, Kansas

Social time at 8:30 a.m.; meeting begins at 9 a.m.

www.kpqg.com

KONZA PRAIRIE QUILTERS' GUILD NEWSLETTER

Prairie Pointer

Hoffman Challenge Garments Are Coming to KPQG

February: The Hoffman Challenge Fashion Show is coming after all. Volunteers will be needed to model clothing in a variety of sizes. The Ricky Tims video, "Quilting Caveman Style and Fishin'", previously scheduled, will be kept for a later program. His website is

www.rickytin.com

Remember, the "usual suspects" should have their Challenge quilts ready to turn in this month.

March: If the shoe Doesn't Fit then Go Barefoot presented by Rosemarie Cromer of Overland Park. According to Rosemary her love of textiles began as a 4-Her. When she was 21, she was an exchange delegate

(Continued on page 4)



Susie Weir tries out a donated sewing machine prior to the auction at the January meeting.

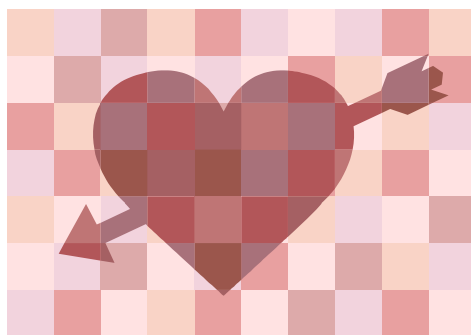
Prez Sez

Thanks to every one who took part in the auction, either by donating, organizing, bidding or buying. A special thanks to Margie Young for setting the pace and getting us started.

It's not too late to enter your UFOs that you will try to finish this year (your name will go into the list for a drawing at the end of the year). Bring your list to put into the notebook in February.

Whoops! We need more help to clean up the kitchen after the meetings. Call me @ 539-4374 to volunteer.

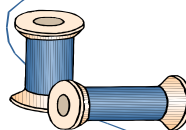
This cold weather has been great for working on the challenge quilt! I've been happy to stay inside and get mine well under way. Please try to get yours finished as this is an important year for the growth of Manhattan. We want to be part of the celebration of Manhattan's sesquicentennial. Charlotte



Registration forms for 2005 quilt show Page 3

January Refreshments

- Dorrie Beckenhauer
- Virginia Bennett
- Shirley Benteman
- Dawn Beshers
- Marilyn Black
- Norma Blakely
- Alison Boyd
- Eunice Bradley



February Birthdays

Pat King	8
Kathryn Burden	9
Shari Reeves	13
Rosalind Gorton	16
Jane Lord	19
Arrilla Fedde	22
Carma Edwards	23
Bonnie Olsen	27
Christine Moore	27
Harriette Janke	27



The February birthday girls are: Carma Edwards, Rosalind Gorton, Pat King, Chris Moore, Bonnie Olsen, Harriette Janke and Kathryn Burden.



New Member Learning from Friends and Workshops

Sharon Pollman hasn't been a member of KPQG for very long but is already serving on the refreshment clean-up committee. She really liked learning sashiko stitching and also likes learning quilting techniques from friends and workshops. Her favorite projects were the 2 redwork and 1 bluework quilts she did for her daughters and a granddaughter.

Sharon was born in Concordia and attended KSU. She has been

(Continued on page 5)

Patchwork Pieces

2005 Officers

- President: Charlotte Herr
- Program Chair: Cindy Ross
- Program Chair-select: Ronna Robertson
- Secretary: Carolyn Dreiling
- Treasurer: Twila Hoffman
- Photographer: Shari Reeves
- Past President: Whitney Short
- Members-at-large: Mary Jo Kurtz, Margie Young, Nan Smail
- Newsletter: Jennie Burden; Circulation: Jeanne Powell
- Committees:** Library: Kay Hummels, Jan Carl, Callie Hildebrand, Doris Beckenhauer; Opportunity Quilt: Margie Young, Harriette Janke; Opportunity Quilt Tickets: Virginia Cleek, Mary Jo Harbour; Refreshments set-up: Barb Warner, Sharon Pollman, Jan Klink; clean-up: Rosie McMullen; Greeters: Norma Larson, Phyllis Norton, Nancy Parker; Block of the Month: Harriette Janke; Challenge: Lana Ellis; Directory: Twila Hoffman; Quilts From the Heart: Bonnie Olsen, Marcella Bechard, Donna Dawson; Quilting Location: Karen Malone; Auction: Dona Koster, Susie Weir.



Charlotte's President's Block:

10½" finished square, containing purple and any colors but black or white, signed or use Charlotte's purple Pigma pen.

Every Thursday from 11 am-3 pm a group meets at the Riley County Senior Center to sew, quilt and visit. Lunch is on your own, except the last Thursday of the month, when it's potluck. Contact: Susie (Weir, Wong or Sapp.)

The **4th Monday** group meets 9:30-3:30 at the clubhouse of the Westbank Townhouses on Rockridge Court. Bring a sack lunch.

Quilters Celebrate 150 Registration

1st choice

Name of Quilt _____

Owner's name _____ phone: _____

Size of quilt _____ year it was made _____

Name of pattern _____

Source (circle one) original design / commercial pattern / inspired by workshop

Person who made quilt _____

My quilt's story

All quilts must have a sleeve on back for hanging. If possible, attach a photo of the quilt to this form. Due May 9.

Quilters Celebrate 150 Registration

2nd choice

Name of Quilt _____

Owner's name _____ phone: _____

Size of quilt _____ year it was made _____

Name of pattern _____

Source (circle one) original design / commercial pattern / inspired by workshop

Person who made quilt _____

My quilt's story

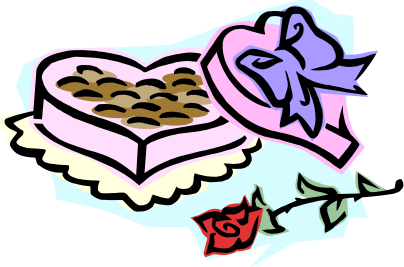
All quilts must have a sleeve on back for hanging. If possible, attach a photo of the quilt to this form. Due May 9.

Upcoming Programs

(Continued from page 1)

to India where she lived in rural villages where cotton was grown, spun and the fabric woven, dyed, and tailored. Since that time she received degrees from Pittsburg and Kansas State. She was a stay-at-home mom, then a teacher at JCCC and Shawnee Mission. Her lecture is about incorporating creativity in your life and her workshop entitled "Playing in Your Scrapbag With Paper Foundation Piecing." Experienced or beginner paper piecers will have fun playing in this workshop. (see supply list below)

April: Bettina Havig.



Playing in Your Scrapbag with Paper Foundation Piecing

Instructor: Rosemary Cromer

This is a technique class to prepare blocks that can be used in quilts, table runners, pillows, etc. This is a great class to encourage creative play with color values and contrast. Experienced or beginner paper piecers will have fun playing in this workshop.

Supply list: **sewing machine**, basic **sewing supplies** including a dirty colored **neutral thread** and **rotary cutting** supplies. Pattern will be furnished by instructor.

Before class: **precut 8-10 strips of fabric** (scraps are good) approximately 3x9" and three **2½" blocks** for centers (I like to use a dark color that can be used throughout the project.) After you get started, you will be able to use smaller scraps and sew together to make fabric.

Press these fabrics before cutting; the more strips, the greater choices in your "play." We will also look at some "quirky" fabrics that I will bring to talk about zingers in your blocks.

I look forward to sharing projects with you as we explore this technique together.



Robbie Courts made this quilt for her ski-themed bedroom.

On the Road

Quilt Shows and Events of Interest

- Feb 25-27 1st Annual Euphoric Appliqué and Quilt Getaway, Linwood. Contacts: Kathy@Kathydelaney.com or mjones@galaxycable.net or egsenuta@kc.rr.com
- Apr 2-3 Walnut Valley Quilters Guild Show, Winfield.
- May 11-14 MQS Show, Overland Park Conv. Ctr, 6000 College Blvd, Overland Park.
- June 3-4 Quilters Celebrate 150 Quilt Show, 1st Presbyterian Church, 8th and Leavenworth, Manhattan. Fri 12-6, Sat 10-5. Admission \$3/day.

(Disclaimer: Information for "On the Road" is gleaned from other sources. You may wish to confirm dates, times and places of quilt shows before traveling to them, as errors sometimes get inserted.)

Missing

Gray KPQG 25th anniversary bag. It has Norma Butler's name tags for both day and evening guild in it and a rain poncho. If anyone has seen it, please return to Norma Butler.

Quilters Celebrate 150

Quilters Celebrate 150 is the name and the theme for our 2005 quilt show. The basic facts are:

Where: First Presbyterian Church, 8th & Leavenworth

When: Friday and Saturday, June 3 & 4

Times: 12-6 Friday, 10-5 Saturday

Admission: \$3/day or \$5/weekend

It is our goal to have 150 quilts hanging for the show, including the Challenge 150 quilts, bed size and wall hanging size quilts, past Presidents Quilts, and past Opportunity quilts. Prairie Star Quilt Guild is co-hosting with us.

Each guild member is asked to enter one or two quilts for the show—made by themselves or someone else. Quilts may be old or new, large or small, traditional or art quilts. This is not a juried show—we'll accept one quilt from each person before going to the second choices.

The planning committee has set up these committees:

Publicity

Vendors—Susie Weir

Mini-affle—Judy Robb and Nancy Graves

Tearoom

Quilt racks—Karen Spaeth and Barb Warner

Registration of Quilts/Program—Jennie Burden

White Glove Brigade

Handing quilts (setup)

Take down of quilts and dismantling racks

Admissions

Day and Night Guild Displays

Vignettes

Security

Bed Turnings

As you can see, several committees already have a chairperson and just need workers. We have intentionally made a number of committees with specific, limited purpose. Like a pie—if one person ate the whole thing, she'd get sick. But if everyone takes just a piece, everyone is happy and has a wonderful taste. At the February meeting we'll be asking for volunteers to chair or be members of the committees. Please step up and do your bit.

To volunteer for a committee, contact Whitney Short (537-3006 or sshort3@cox.net) or Karen Spaeth (539-1362 or kspaeth@cox.net).



Marcella Bechard's fish.

Sharon Pollman

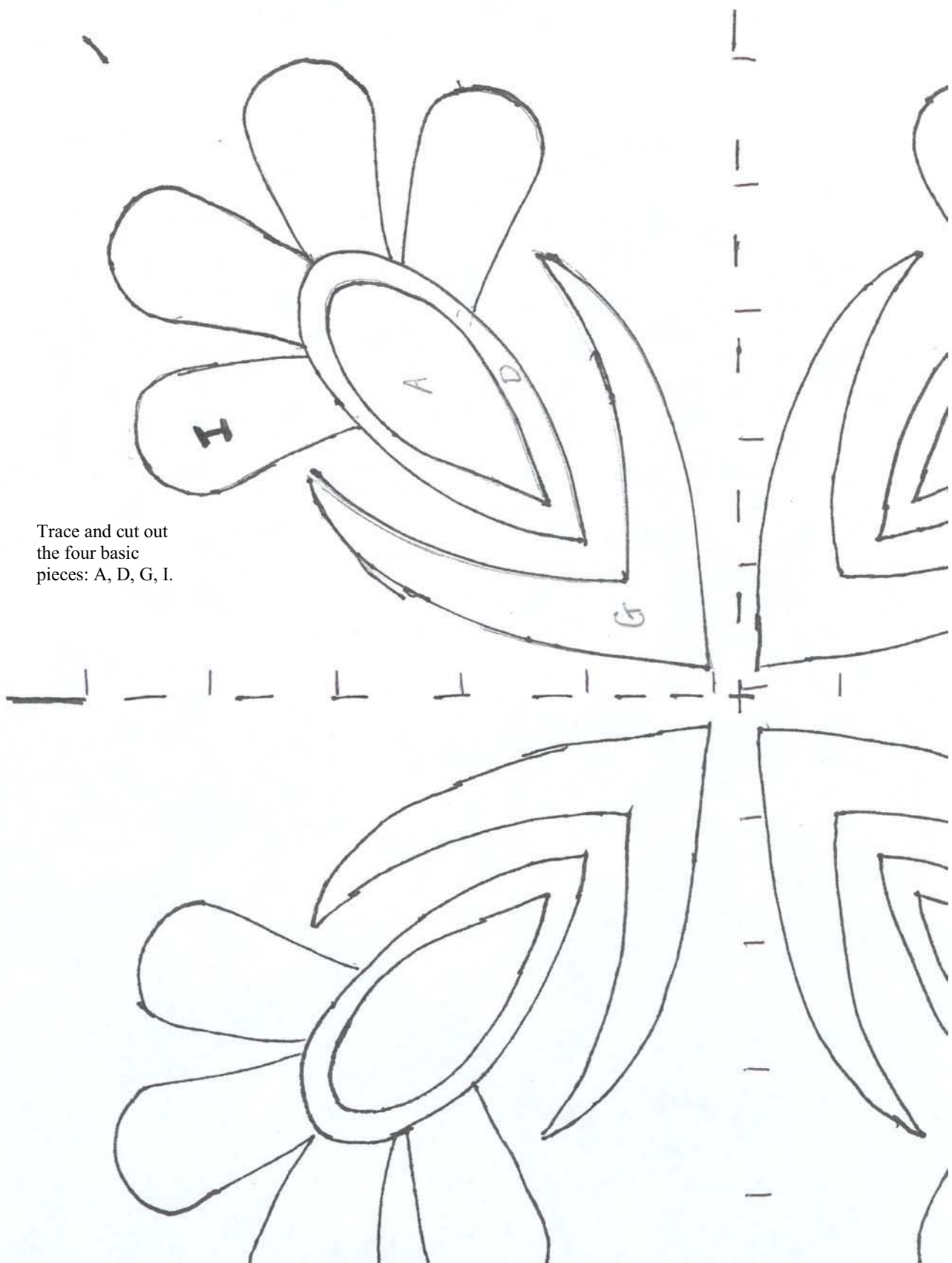
(Continued from page 2)

married to Richard for 35 years. She worked at a public accounting firm, then at Farm Bureau and now part-time for a real estate firm. Her volunteer work includes being treasurer for a church ladies group and co-chairing the reception committee.

Besides quilting, Sharon enjoys all kinds of needlework, especially thread crochet, embroidery and counted cross-stitch. She also bowls and reads. She likes pieced and traditional quilts. While she has done some hand quilting on small projects, she hasn't tried machine quilting. She finds quilting relaxing and likes to see a project build up to the finish.

Business Matters

- All-day workday for Quilts from the Heart is scheduled for August 16, in Clifton at Faith United Presbyterian Church. Lunch will be provided.
- KPQG board voted to send \$100 each to the American Red Cross and UNICEF for tsunami relief.
- Donna Dawson has kits for making Quilts From the Heart anytime the urge strikes you.



Trace and cut out
the four basic
pieces: A, D, G, I.

The copying process changes size of pattern; you may need to increase or decrease to fit the block. Note the inch marks—if you adjust the pattern so these are actually 1" apart, you will have the correct size.

Spring Retreat for Quilts from the Heart

The spring retreat will begin Friday April 8 at noon and end Sunday April 10 after breakfast. This year's location is the Party Barn at Scenic Valley Inn, 610 S. Scenic Dr.

Cost for the weekend is \$25 (2 nights lodging and 2 breakfasts). Cost for meals: \$5 for dinners (served Friday and Saturday), \$4 for lunch (Saturday only.)

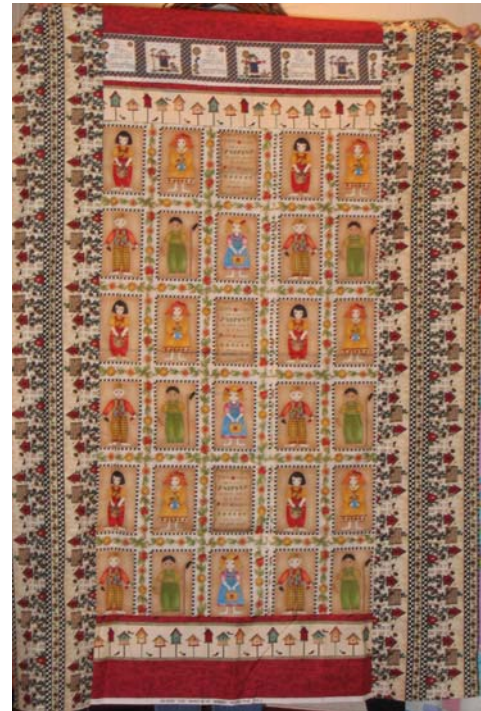
You will need to bring basic sewing supplies, machine (complete supply list will be available with signup at the February guild meeting) bedding, pillow, towels, clothes and toiletries, and snacks to share.

Directions to reach the Party Barn:

- ~ From Manhattan take Anderson Ave. west all the way through the town to the intersection of Anderson and Kimball Extension, which changes to Scenic Dr. at the flashing stop light.
- ~ Turn left and continue 1.8 miles to South Scenic Dr.
- ~ There are 5 yellow and black curve signs; be prepared to turn right onto the development road after the 4th sign. There is a break in the guard rail.
- ~ You will see blue reflectors on your right. Turn right onto the gravel road; you will see the green mailbox with the address 610 S. Scenic Dr.
- ~ Continue on 1/4 mile; two blue reflectors are at the top of the drive.
- ~ Turn left, cross the bridge and go around the Party Barn.
- ~ Unload your car at the Party Barn and then you will be instructed where to park.

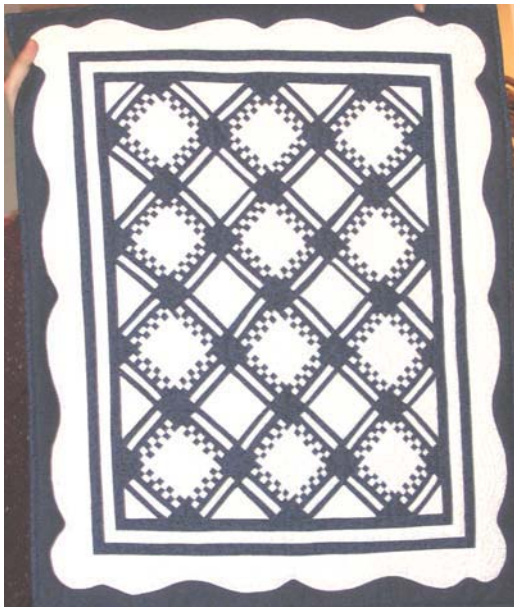
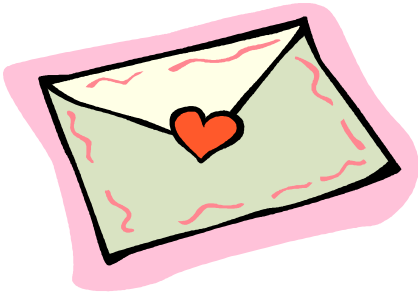
If you have questions call Donna Dawson or Bonnie Olsen.

Quilts From the Heart—The Crisis Center has used approximately 70 quilts to date. Some were used to fill the wishes of children in families that were adopted at Christmas.

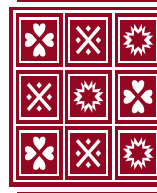


KONZA PRAIRIE QUILTERS' GUILD
BOX 271
MANHATTAN KS 66505-0271

www.kpqg.com



Dona Koster shared this wall hanging which her sister helped her finish for a Christmas gift.



Carol H. Elmore

**Quilt and Quilted Textile
Appraisals, Lectures, and Workshops**

Written and Oral Appraisals of antique quilts,
contemporary quilts, & other quilted textiles for:

*Insurance replacement value,
Fair market value, & Donation value*

Carol is a certified American Quilter's Society Appraiser.
Appointments available for home, quilting groups, coffee
groups, or others. All appraisals are confidential
Call (785) 537-7221

Prairie Star Quilt Guild

Second Monday of each month

7:15 pm Pottorff Hall, Cico Park, Manhattan

Sunflower Quilt Guild

Fourth Tuesday 6:30 p.m.

Dorothy Bramlage Library, Junction City



The *Prairie Pointer* is the monthly newsletter of Konza Prairie Quilters' Guild. Membership is open to all those interested in quilts and quilting. Yearly dues are \$35 and include 12 Opportunity Tickets, admission to all meetings, monthly newsletter, access to library materials, block of the month patterns, and opportunity to participate in workshops, field trips and public events. Guests are welcome and may attend twice before joining.